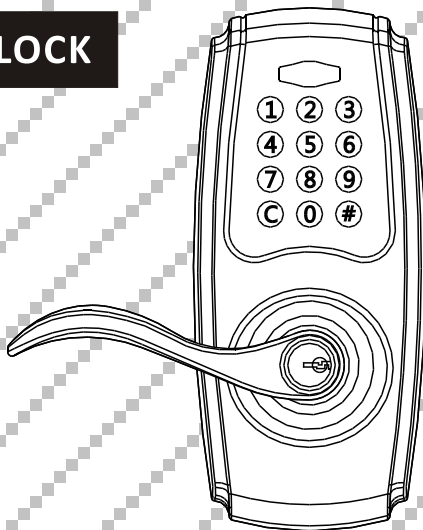


ELECTRONIC KEYPAD LEVER LOCK

Security • Technology

User's Guide



IMPORTANT SAFETY INSTRUCTION

WARNING

1. To prevent damage to the finish, DO NOT use any abrasives, sharp objects or harsh chemical products containing alcohol, petroleum solvents, acids or acetone to clean this lockset.
2. To prevent damage to the sensitive electronic components, DO NOT allow any liquids to enter lockset while installing or cleaning.

CAUTION !

1. Do not attempt to disassemble any internal components of this lockset as this WILL void the limited warranty.
2. Do not drop or hit/strike the lockset as excessive shock may result in permanent damage.
3. Do not use sharp objects to press key buttons.
4. It is STRONGLY recommended that you always create a written backup of the programming code and individual user codes. Please use the last page of this booklet as your reference.
5. For your Security, please remember to change this lockset's factory default programming code to a PERSONAL programming code prior to normal day to day use of this product (See Page 28).
6. It is STRONGLY recommended that you use only ALKALINE BATTERIES to operate this product.

CONTENTS

INSTALLATION INSTRUCTIONS

1. COMPONENTS	4
TEMPLATE	5
2. DOOR PREPARATION	6
3. LATCH INSTALLATION	7
4. STRIKE PLATE INSTALLATION	9
5. LEVER DIRECTION DETERMINATION	10
6-1. TO RESET DIRECTION OF INSIDE LEVER	12
6-2. TO RESET DIRECTION OF OUTSIDE LEVER	13
7-1. MOUNTING EXTERIOR ASSEMBLY	14
7-2. PREPARING TO MOUNT INTERIOR ASSEMBLY	15
7-3. REMOVING DECORATIVE COVER	16
7-4. MOUNTING INTERIOR ASSEMBLY	17
7-5. BATTERY INSTALLATION	18
7-6. REINSTALL LEVER	19
8-1. EXCHANGE OF LEVER	20
8-2. EXCHANGE OF LEVER (REMOVAL OF INSIDE LEVER)	21
8-3. EXCHANGE OF LEVER (REMOVAL OF OUTSIDE LEVER)	22
8-4. SWAP INSIDE AND OUTSIDE LEVERS (REMOVAL OF CYLINDER)	23
8-5. SWAP INSIDE AND OUTSIDE LEVERS (ASSEMBLE OUTSIDE LEVER)	24
8-6. SWAP INSIDE AND OUTSIDE LEVERS (ASSEMBLE INSIDE LEVER)	25

CONTENTS

MAIN OPERATING INSTRUCTIONS	26
SETUP MODE	
1. CHANGE PROGRAMMING CODE	28
2. ADD A USER CODE	29
3. DELETE INDIVIDUAL EXISTING USER CODE	29
4. DELETE ALL THE EXISTING USER CODES AT ONCE	30
5. DISABLE ALL THE EXISTING USER CODES (VACATION MODE)	30
6. DISABLE BUTTON SOUND (MUTE MODE)	31
7. SETTING AUTO-LOCK TIME DELAY	31
8. RESTORE FACTORY SETTING	31
OPERATION MODE	
1. TO ACTIVATE AUTO-LOCKING (AUTOMATIC RE-LOCKING)	32
2. TO OPEN (UNLOCK) THE DOOR	33
3. TO DEACTIVATE AUTO-LOCKING (AUTOMATIC RE-LOCKING)	34
TROUBLESHOOTING GUIDELINE	35
DATA RECORDS	37
DECLARATION AND SAFETY STATEMENTS	38

INSTALLATION INSTRUCTIONS

1. COMPONENTS

A. Key

B. Exterior Assembly

C. Mounting Plate

D. Interior Assembly

E. Decorative Cover

F. Battery Pack Cover

G. Lever

H. 5/16" (7.8mm) Screw (2)

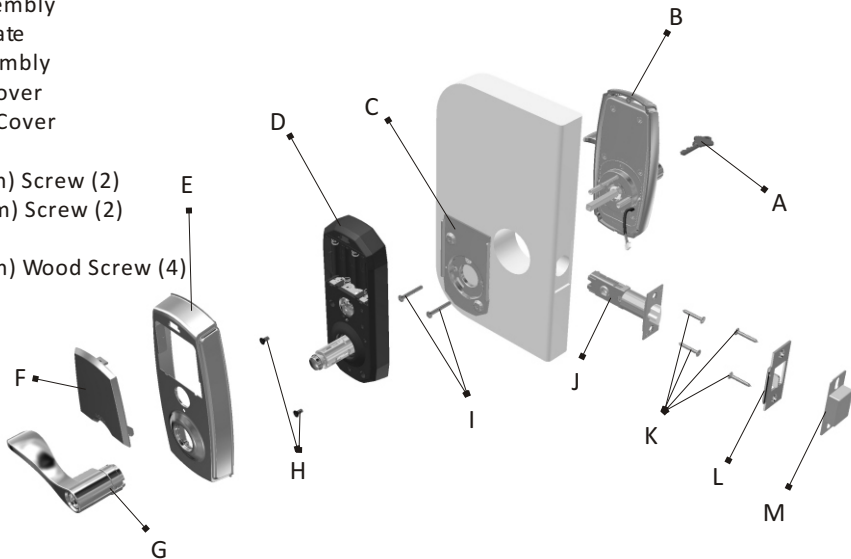
I. 1-1/4" (32mm) Screw (2)

J. Latch

K. 6/8" (19.2mm) Wood Screw (4)

L. Strike

M. Dust Box

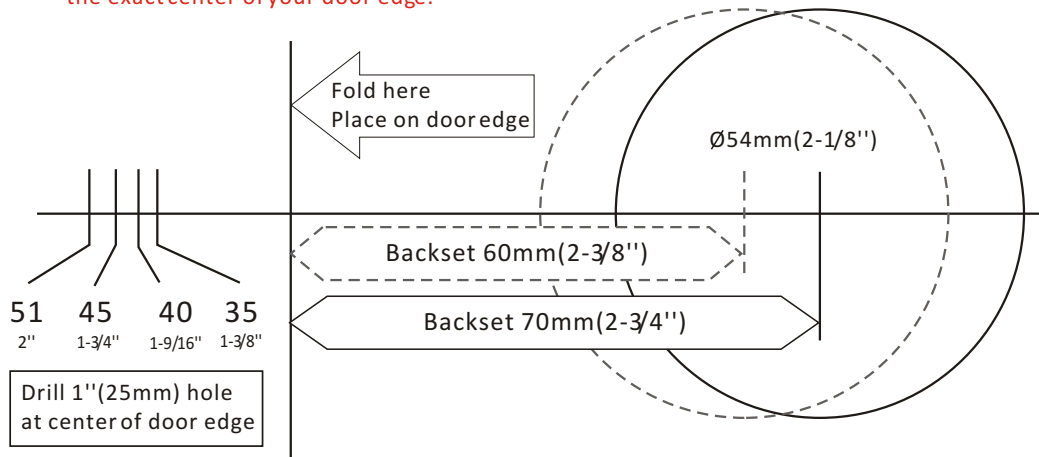


TEMPLATE

IMPORTANT BEFORE PROCEEDING

1. Remove lever lock, or do not install lever lock prior to painting your door.
2. Do not let any water or liquid into the lockset during installation process.

NOTE: MEASUREMENTS BELOW ARE JUST A GUIDELINE. Please measure your door to determine the exact center of your door edge.

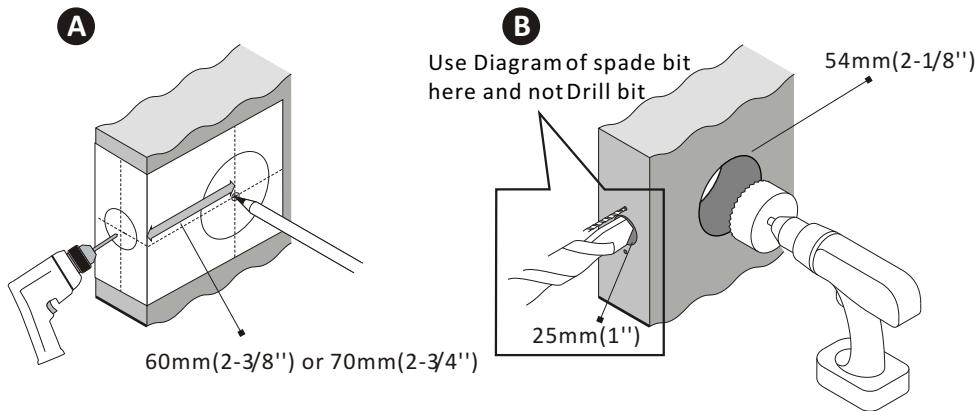


DOOR PREPARATION

2. DOOR PREPARATION

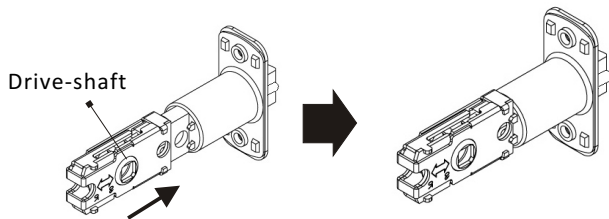
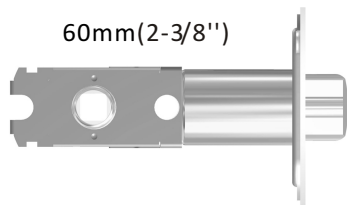
NOTE: If replacing an existing lock or installing in a pre-drilled door, begin with page 7.

Fold the template against the door edges as shown in below illustration, mark and drill a pilot hole for latch on door edge, select backset (60mm or 70mm) to mark and drill a pilot hole for selected backset on door face. (It is recommended to mark centerline of the hole on door about 36 inches (914mm) above the floor.)

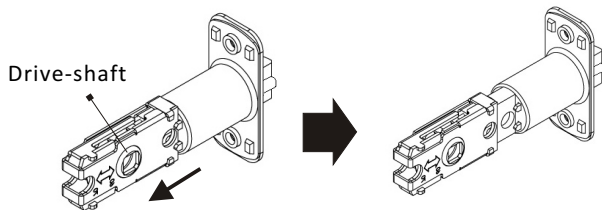
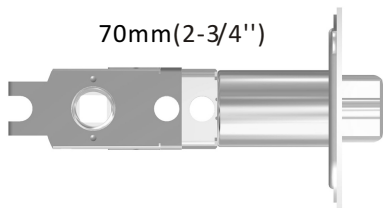


INSTALLATION INSTRUCTIONS

3. LATCH INSTALLATION



B. Push the drive-shaft forward for adjustment to 60mm(2-3/8").



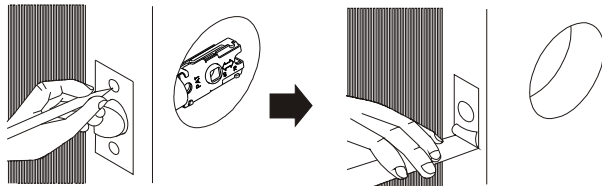
A. Pull the drive-shaft backward for adjustment to 70mm(2-3/4").

INSTALLATION INSTRUCTIONS

3. LATCH INSTALLATION

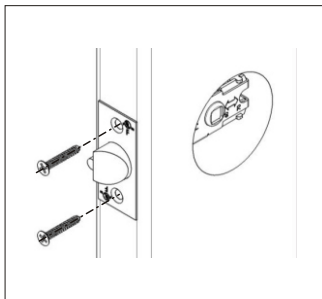
- A. Insert the latch into the latch hole. Using the faceplate as a pattern, TRACE a line along the out edge of the faceplate and chisel a 4mm (1/8") slot in the marked out area. Face plate should fit flush with doore edge.
- B. Insert the latch into the latch hole and fasten with screws.

A



Show pencil marking outer edge of latch faceplate with Dotted lined directional arrows as you do not just carve out the screw holes

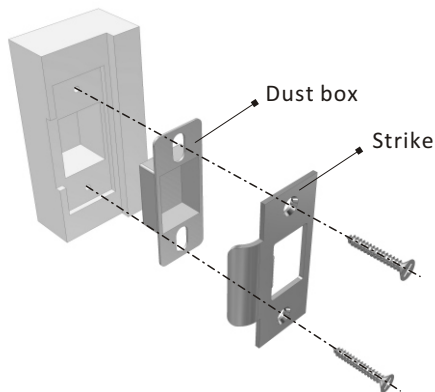
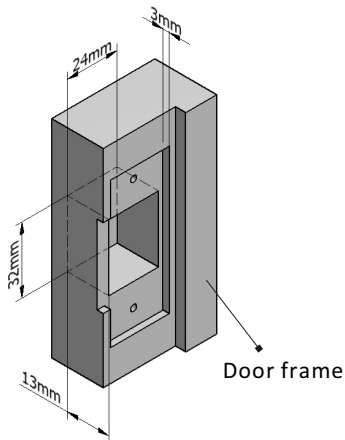
B



INSTALLATION INSTRUCTIONS

4. STRIKE PLATE INSTALLATION

- A. Placing the strike plate on the door frame, TRACE a line along the out edge of the strike plate and chisel a 3mm (1/8") slot in the marked out area.
- B. Chisel out a hole measuring 32 x 24 x 13mm (1-1/4"X1"X1/2") in association with the size of the dust box.
- C. Fasten the strike and dust box with screws.



INSTALLATION INSTRUCTIONS

5. LEVER DIRECTION DETERMINATION

NOTE: Do not install the lock when the lever is at vertical position.

Before lock installation, please determine the inside lever direction according to the opening direction of door as shown.



INSTALLATION INSTRUCTIONS

5. LEVER DIRECTION DETERMINATION

NOTE: Do not install the lock when the lever is at vertical position.

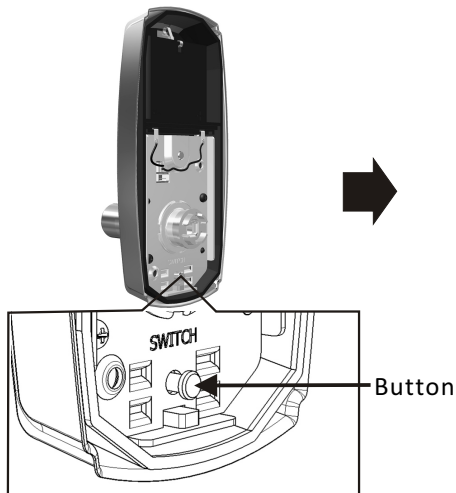
Before lock installation, please determine the outside lever direction according to the opening direction of door as shown.



INSTALLATION INSTRUCTIONS

6-1. TO RESET DIRECTION OF INSIDE LEVER

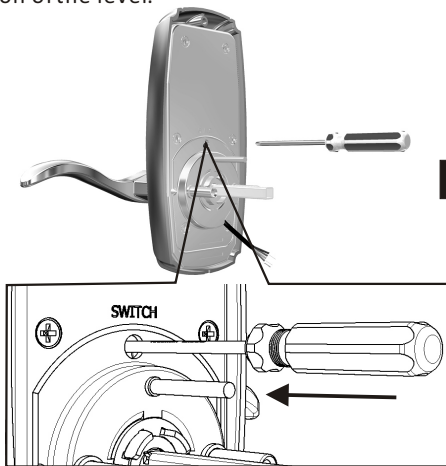
Press the button below "SWITCH" mark of the interior assembly to free inside lever and turn it upward then down to the correct horizontal direction with the door. Lever will be fixed in position after a sound of "click". Follow the page 10 to determine the direction of the lever.



INSTALLATION INSTRUCTIONS

6-2. TO RESET DIRECTION OF OUTSIDE LEVER

Use a screwdriver to press the button in the hole below "SWITCH" mark of the exterior assembly to free outside lever and turn it upward and then down to the correct horizontal direction with the door. Lever will be fixed in position after a sound of "click". Follow the page 11 to determine the direction of the lever.

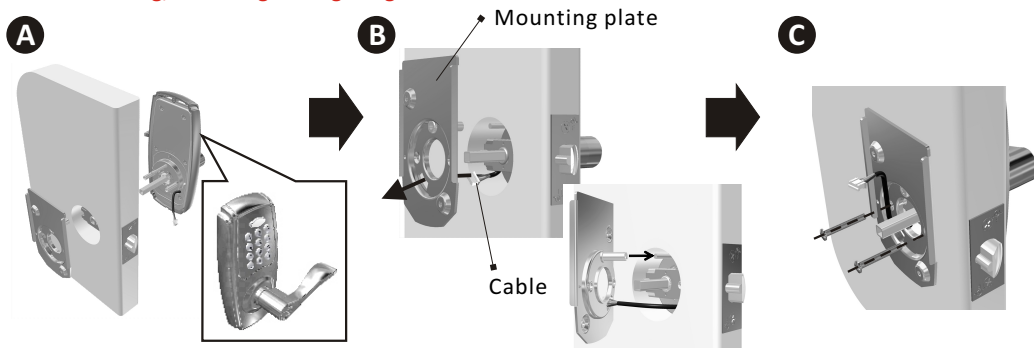


INSTALLATION INSTRUCTIONS

7-1. MOUNTING EXTERIOR ASSEMBLY

- A. Slide the spindle and screw posts through the latch and thread the cable under the latch.
- B. Thread the cable through the rectangular hole in the mounting plate and combine the posts of the mounting plate and the exterior assembly.
- C. Fasten the mounting plate with 2 screws (32mm or 1 1/4") while ensuring the exterior assembly is held in the "true vertical" position on door face.

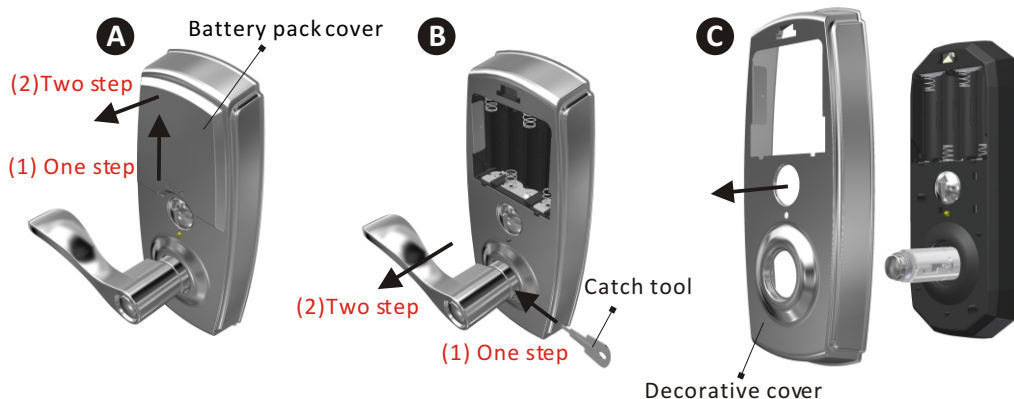
NOTE: Exterior assembly will not sit completely flush with door face until screws are tightened completely as there are 2" anchoring spikes which prevent the exterior assembly from shifting/wobbling during usage.



INSTALLATION INSTRUCTIONS

7-2. PREPARING TO MOUNT INTERIOR ASSEMBLY

- A. Remove battery pack cover by pushing it up to the top position. (Please follow two steps)
- B. Remove the lever by inserting the catch tool into the access hole and depressing to release catch while gently pulling on lever. Once catch has been released, remove the catch tool from the access hole to allow the lever to pull off completely. (Please follow two steps)
- C. Follow the steps on page 16 to remove the decorative cover.

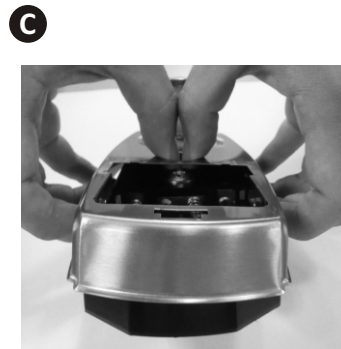
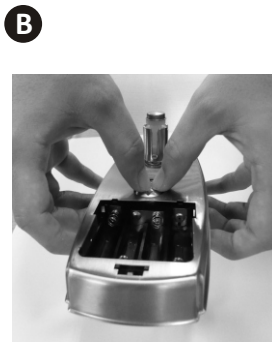


INSTALLATION INSTRUCTIONS

7-3. REMOVING DECORATIVE COVER

A. Remove decorative cover by holding fingers at cover's edges as shown in photo A.

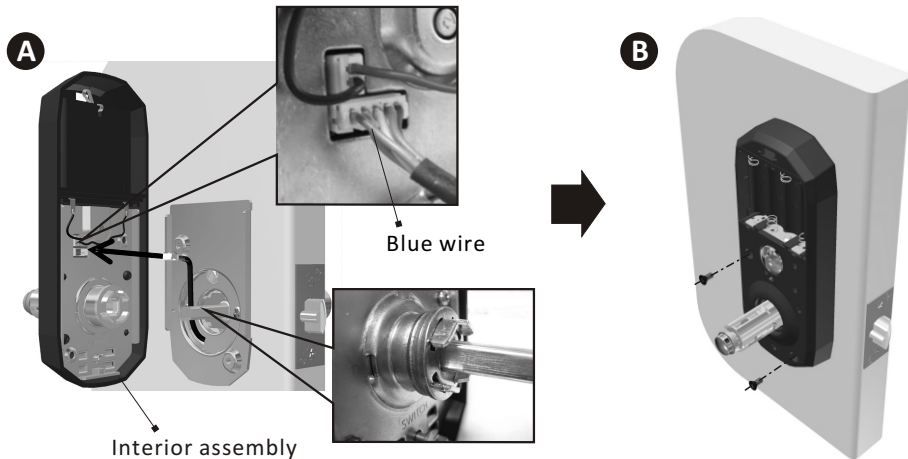
B. Use thumb to press "THUMBTURN" as shown in photo B and photo C.



INSTALLATION INSTRUCTIONS

7-4. MOUNTING INTERIOR ASSEMBLY

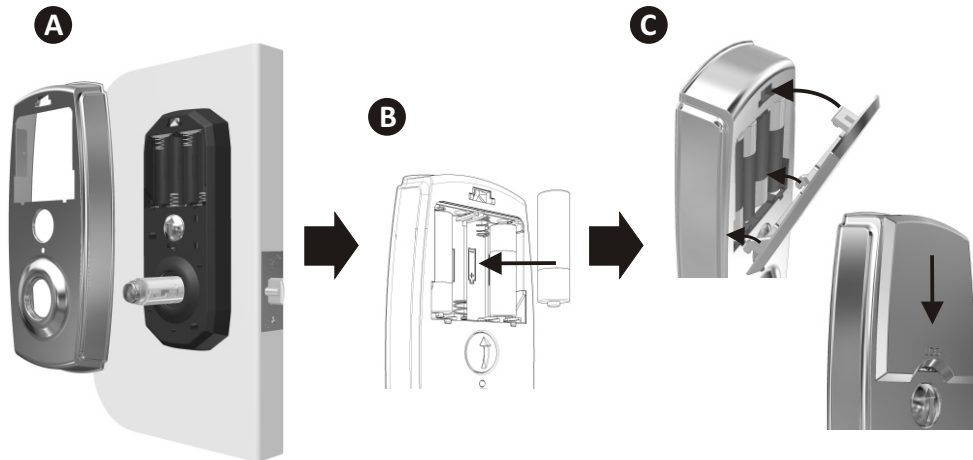
- A. Insert the cable into the connector port firmly with blue wire just under the red black wires of the port as shown.
- B. Slide the interior assembly onto square spindle of the exterior assembly.
- C. Fasten the interior assembly on the mounting plate with 2 screws (7.8mm or 0.3").



INSTALLATION INSTRUCTIONS

7-5. BATTERY INSTALLATION

- A. Snap the decorative cover back onto the interior assembly.
- B. Place four alkaline batteries into the battery pack. Following the imprinted "+" / "-" guide.
- C. Replace the battery pack cover as shown.

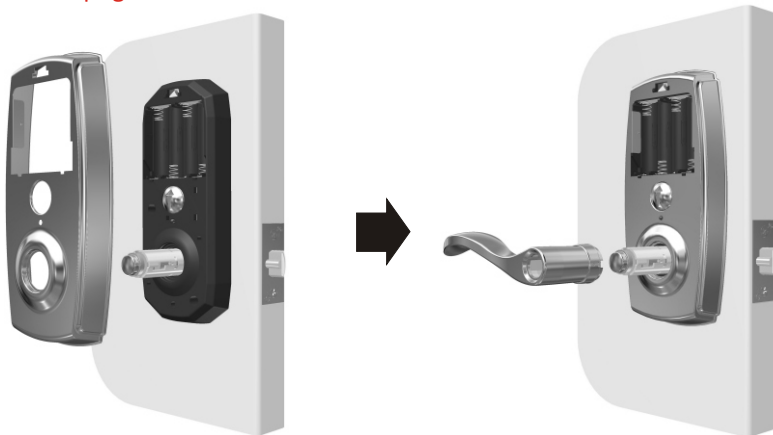


INSTALLATION INSTRUCTIONS

7-6. REINSTALL LEVER

Reinstall the lever after the decorative cover is snapped back onto the interior assembly.

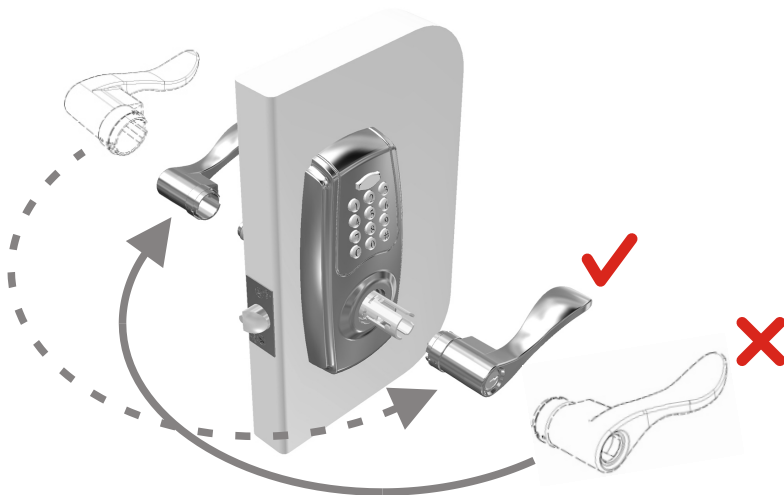
NOTE: If you follow page 10-13 to change inside and outside levers to proper direction, you can skip the following instructions about exchange of lever to setup mode started in page 28.



INSTALLATION INSTRUCTIONS

8-1. EXCHANGE OF LEVER

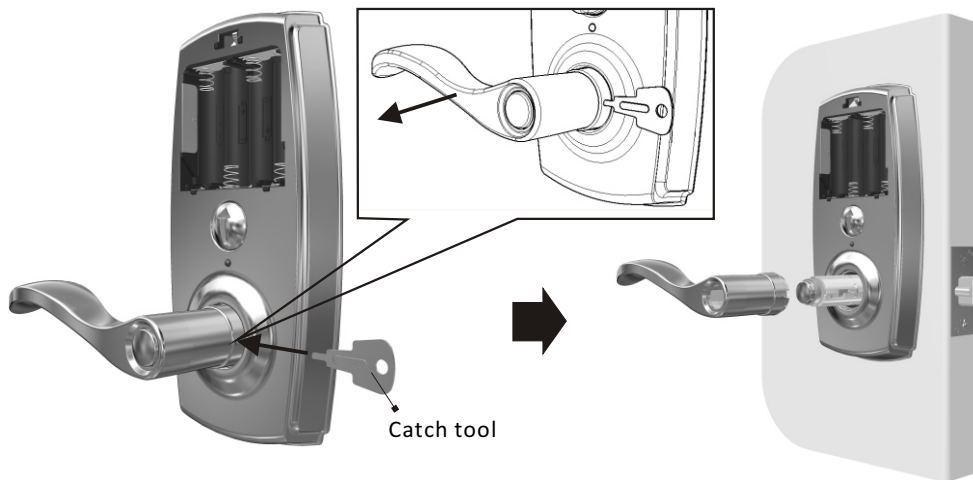
For lever removal and assembly process, please see page 21-25.



INSTALLATION INSTRUCTIONS

8-2. EXCHANGE OF LEVER (REMOVAL OF INSIDE LEVER)

Insert the catch tool into the access hole on the lever. Once the lever is released, remove the catch tool and pull the lever off.



INSTALLATION INSTRUCTIONS

8-3. EXCHANGE OF LEVER (REMOVAL OF OUTSIDE LEVER)

- A. Insert the key horizontally and turn counter-clockwise 90 degrees.
- B. Insert the catch tool into the access hole on the lever. Once the lever is released, remove the catch tool and pull the lever off.

NOTE: This step is required if you are rekeying the lock.

A



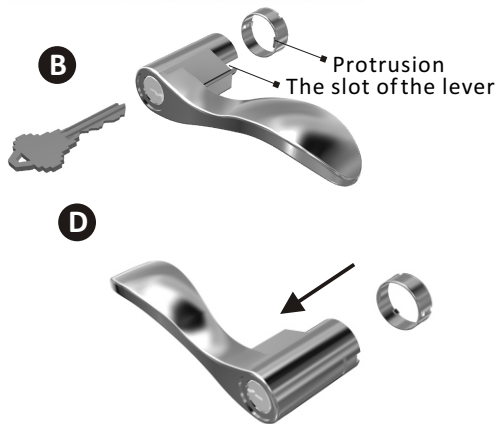
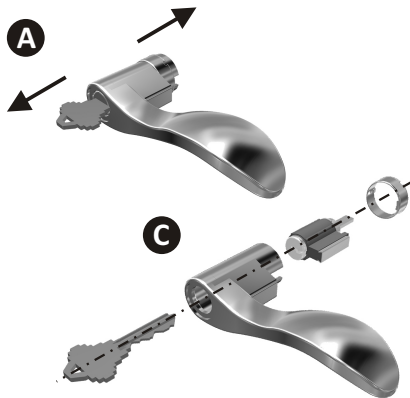
B



INSTALLATION INSTRUCTIONS

8-4. SWAP INSIDE AND OUTSIDE LEVERS (REMOVAL OF CYLINDER)

- A. With lever removed, withdraw the key.
- B. Slide the cylinder retaining collar off the shank of the lever.
- C. Remove the cylinder.
- D. Insert cylinder into the other lever. Align the tab of the cylinder retaining collar with the slot of lever shank and push it back to secure cylinder in place.



INSTALLATION INSTRUCTIONS

8-5. SWAP INSIDE AND OUTSIDE LEVERS (ASSEMBLE OUTSIDE LEVER)

- A. Turn the key counter-clockwise by 90 degree to vertical position as shown.
- B. Push outside lever back to slide onto spindle until it is securely engaged.



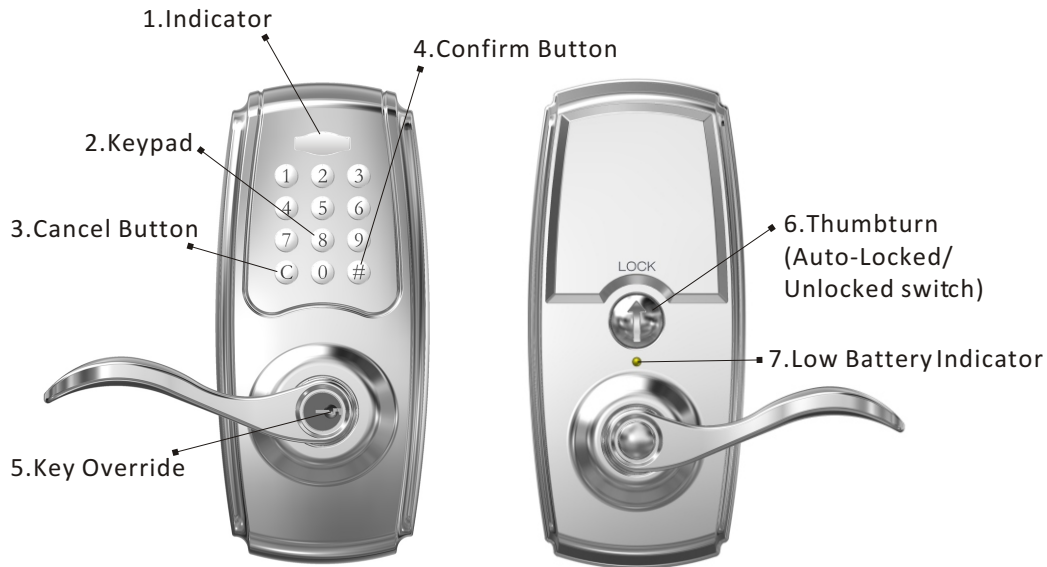
INSTALLATION INSTRUCTIONS

8-6. SWAP INSIDE AND OUTSIDE LEVERS (ASSEMBLE INSIDE LEVER)

Align inside lever and push it back to slide onto spindle until it is securely engaged.



MAIN OPERATING INSTRUCTIONS



MAIN OPERATING INSTRUCTIONS

1. INDICATOR

- (1) Green light: indicates the user code entered is valid.
- (2) Red light: The user code entered is a invalid / Under setup mode.
- (3) Yellow light: Low battery warning.
- * All batteries should be replaced if the yellow light is on or keeps flashing.

2. KEYPAD (0~9)

- (1) To unlock the lockset by entering a valid code.
- (2) To program the lockset.

3. (C) CANCEL BUTTON

When mis-typing codes during any process, press Cancel Button to cancel the wrong codes and re-enter the correct codes.

4. (#) CONFIRM BUTTON

- (1) Access the setup mode.
- (2) Confirm the input code in the setup mode.

5. KEY OVERRIDE

To unlock the lockset by a valid key.

6. THUMBTURN (Auto-Locked/Unlocked switch)

- (1) It is auto-locked when the thumbturn is vertical.
- (2) It is unlocked when the thumbturn is horizontal.
- (3) Used to access setup mode when the thumbturn is horizontal.

7. LOW BATTERY INDICATOR

Please replace all the batteries if the indicator keeps flashing.

SETUP MODE

IMPORTANT :

The internal thumbturn enables / disables exterior lever.

The internal thumbturn is horizontal position to be unlocked (passage lock).

The internal thumbturn is vertical position to be auto-locked (entry lock).

Please DO NOT press the lever when programming the lockset

1.CHANGE PROGRAMMING CODE (THIS PROGRAMMING CODE MUST BE 6-DIGITS IN LENGTH)

- (1) The pre-set programming code of the product is 123456, please change it before operating the lockset.
- (2) Keep a written copy of programming code in a safe place.
- (3) Programming code can be used to unlock.

Procedures:

- (1) Rotate the internal thumbturn to horizontal position → press # (the red indicator is on, you are in setup mode)
- (2) Enter 1-2-3-4-5-6 (or current Programming Code) → press# → press10 → press# → input new programming code → press # (the red indicator is off in 10 sceonds).

SETUP MODE

2. ADD A USER CODE (MAXIMUM 100 SETS USER CODES WITH 4-8 DIGITS IN LENGTH.)

Procedures:

- (1) Rotate the internal thumbturn to horizontal position → press # (the red indicator is on, you are in setup mode)
- (2) Input programming code → press # → press 20 → press # → enter new user code → press # → enter new user code → press # ... may input 100 sets of user code consecutively (the red indicator is off in 10 seconds).

(If a number of passwords are to be added at the same time, enter new password and press # prior to the indicator light timing out 10 seconds after the last press of a keypad button.)

3. DELETE INDIVIDUAL EXISTING USER CODE

Procedures

- (1) Rotate the internal thumbturn to horizontal position → press # (the red indicator is on, you are in setup mode)
- (2) Input programming code → press # → press 30 → press # → enter existing user code to be deleted → repeat pressing # and entering existing user code to be deleted consecutively until each set of user code is deleted. (the red indicator is off in 10 seconds).

(if multiple sets of user codes are to be deleted at the same time, enter each user code to be deleted and press # repeatedly prior to the indicator light timing out 10 seconds after the last press of a keypad button.)

SETUP MODE

4. DELETE ALL THE EXISTING USER CODES AT ONCE

Procedures

- (1) Rotate the internal thumbturn to horizontal position → press # (the red indicator is on, you are in setup mode)
 - (2) Input programming code → press # → press 40 → press # → press and hold C (for 3 seconds) until a beep is heard.
- (This will delete all the user codes EXCEPT the programming code)

5. DISABLE ALL THE EXISTING USER CODES (VACATION MODE)

Procedures

- (1) Rotate the internal thumbturn to horizontal position → press # (the red indicator is on, you are in setup mode)
 - (2) Input programming code → press # → press 50 → press #.
- (Please repeat the above procedures to enable all the user codes)

NOTE: If you will be away from home for vacation, please use vacation mode to prevent anyone accessing your lock and this will just make the codes Temporarily "INACTIVE", not DELETE them from the unit.

SETUP MODE

6.DISABLE BUTTON SOUND (MUTE MODE)

Procedures

- (1) Rotate the internal thumbturn to horizontal position → press # (the red indicator is on, you are in setup mode)
 - (2) Input programming code → press # → press 60 → press #.
- (Please repeat the above procedures to enable the button sound)

7. SETTING AUTO-LOCK TIME DELAY (DEFAULT VALUE IS 5 SECONDS)

Procedures

- (1) Rotate the internal thumbturn to horizontal position → press # (the red indicator is on, you are in setup mode)
- (2) Input programming code → press # → press 70 → press # → press the seconds for delay time of auto-locking (5-90) → press # (the red indicator is off in 10 seconds).

NOTE: Do not enter leading zeros - use "5" not "05".

8.RESTORED FACTORY SETTING

Procedures

Rotate internal thumbturn to horizontal position → remove any of the batteries → press and hold # until all batteries are installed again → reset is finished when the lock beeps a long beep of 3 seconds and a short beep.

(Such action will delete all the stored user codes, the programming code will be reset to the default code 123456. Please re-change the programming code for the safety purpose.

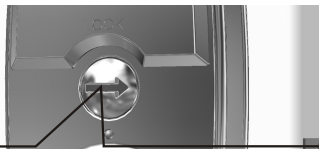
OPERATION MODE

1. TO ACTIVATE AUTO-LOCKING (AUTOMATIC RE-LOCKING)

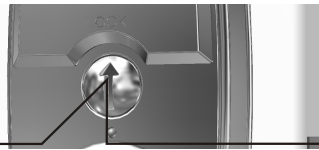
- A. Use a flat tool to turn the thumbturn on the inside to vertical position as shown to activate auto-locking mode, i.e., this device will be relocked automatically in 5 seconds (default value) after unlocking. Then outside lever is free turning without retracting latch to open the door.
- B. Turn the thumbturn on the inside to horizontal position as shown to deactivate auto-locking mode.

NOTE: Must turn the thumbturn to vertical (auto-locked) position while completing setup mode.

A



Horizontal (arrow) position is unlocked



Vertical (arrow) position is auto-locked



B



OPERATION MODE

2. TO OPEN (UNLOCK) THE DOOR

- A. Enter the correct user code or programming code.
- B. Upon the green indicator light on and a short beep heard, turn the outside lever to unlock.



OPERATION MODE

3. TO DEACTIVATE AUTO-LOCKING (AUTOMATIC RE-LOCKING)

Use a flat tool to turn the slotted turn on the inside as shown from vertical position to horizontal position to deactivate auto-locking mode. The device is then served as a passage lever.



TROUBLESHOOTING GUIDELINE

Problem	Solutions
A. Keypad does not respond	<ol style="list-style-type: none">1. Check to see if the batteries are properly installed.2. Check to see if the indicator is flashing. It means "the battery is low" if the indicator keeps flashing.3. Make sure the cable is well-connected to the port.4. Please contact us if such problem could not be solved.
B. Can not change programming code	<ol style="list-style-type: none">1. Complete the "CHANGE PROGRAMMING CODE" process by inputting codes within 10 seconds.2. Make sure you have entered the new programming code twice correctly or go back to the factory setting (refer to page 31) again.3. Please contact us if such problem could not be solved.
C. Can not delete all the existing user codes at once	<ol style="list-style-type: none">1. Make sure all codes are entered within 10 seconds.2. Make sure you have entered the correct programming code.3. Cancel button should be pressed and held for 3 seconds at least.
D. Cannot add a new user code.	<ol style="list-style-type: none">1. Make sure all codes are entered within 10 seconds.2. Make sure you have entered the correct programming code.3. The new user code will not be accepted if 100 user codes are already stored in the memory.

TROUBLESHOOTING GUIDELINE

Problem	Solutions
E. Can not open the door after input a correct	<ol style="list-style-type: none">1. Make sure you have entered the correct user code.2. Check to see if the indicator is flashing. If the indicator is flashing, please replace the batteries with new ones.3. Please make sure the strike plate is installed correctly if you see the latch is jammed.
F. Yellow indicator is on or keeps flashing	<ol style="list-style-type: none">1. It means these batteries are getting low, please replace all the batteries.2. Use alkaline batteries only.
G. What happens if the lever lock cannot be auto- locked after closing door	<ol style="list-style-type: none">1. Make sure the arrow of the thumbturn is directed to LOCK.2. Make sure the key is withdrawn from the lock.
H. Yellow indicator keeps flashing or the lock keeps beeping after unlocking.	<ol style="list-style-type: none">1. It means these batteries are getting low, please replace all the batteries.2. Use alkaline batteries only.
I. Red indicator keeps flashing and beeping when I try to program the lockset	<ol style="list-style-type: none">1. Make sure you have entered the correct programming code.2. Make sure the lever is leveled (horizontal) completely.

DATA RECORDS

SECURITY INSTRUCTIONS :

1. Do not share your programming code with anyone else.
2. Keep a written copy of all valid user codes in safe place. (You may use the table below to record your information)
3. Code capacity: 100 sets maximum.
4. You are advised to re-program all codes if you lost any security information of the lever lock.

PROGRAMMING CODE					
NAME	CODE	NAME	CODE	NAME	CODE

FEDERAL COMMUNICATIONS COMMISSION STATEMENT

This device complies with Part 15 of the FCC. Operation is subject to the following two conditions:

(1) this device may not cause harmful interference, and (2) this device must accept any interference received, including interference that may cause undesired operation.

Changes or modifications not expressly approved by the party responsible for compliance could void the user's authority to operate the equipment.

NOTE: This equipment has been tested and found to comply with the limits for a Class B digital device, pursuant to part 15 of the FCC Rules. These limits are designed to provide reasonable protection against harmful interference in a residential installation. This equipment generates, uses and can radiate radiofrequency energy and, if not installed and used in accordance with the instructions, may cause harmful interference to radio communications. However, there is no guarantee that interference will not occur in a particular installation. If this equipment does cause harmful interference to radio or television reception, which can be determined by turning the equipment off and on, the user is encouraged to try to correct the interference by one or more of the following measures:

- Reorient or relocate the receiving antenna.
- Increase the separation between the equipment and receiver.
- Connect the equipment into an outlet on a circuit different from that to which the receiver is connected.
- Consult the dealer or an experienced radio/TV technician for help.

IC REGULATIONS

This Class B digital apparatus complies with Canadian ICES-003 .

Cet appareil numérique de la classe B est conforme à la norme NMB-003 du Canada.

This device complies with Industry Canada licence-exempt RSS-210 standard. Operation is subject to the following two conditions: (1) this device may not cause harmful interference, and (2) this device must accept any interference received, including interference that may cause undesired operation of the device.



Rev.12/06-02 G00-L000012