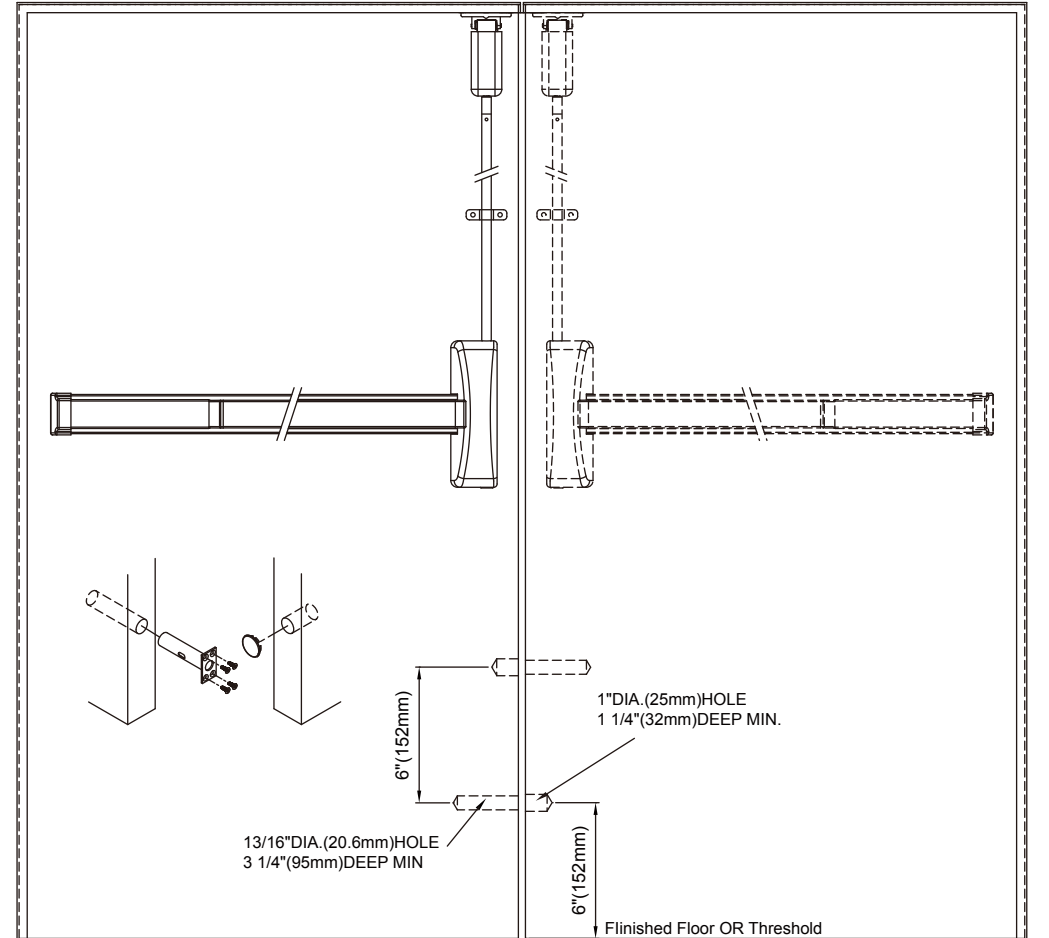
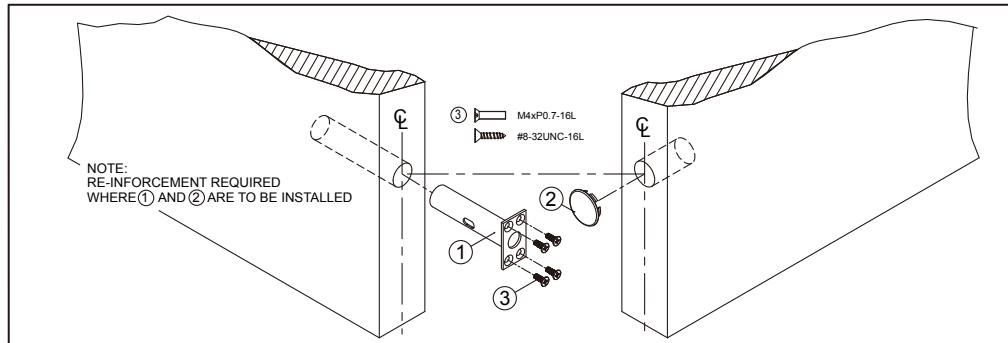


FIRE RATED LESS BOTTOM ROD POPPER INSTALLATION INSTRUCTIONS FOR PAIRS OF DOORS

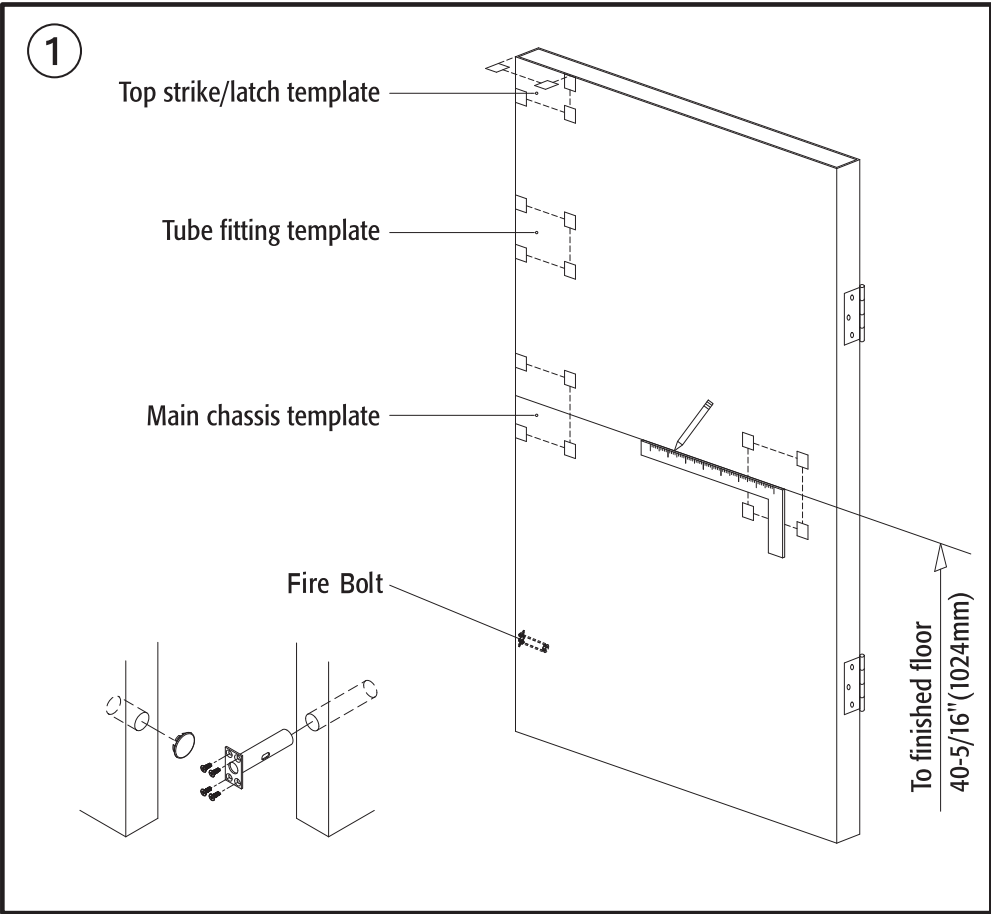
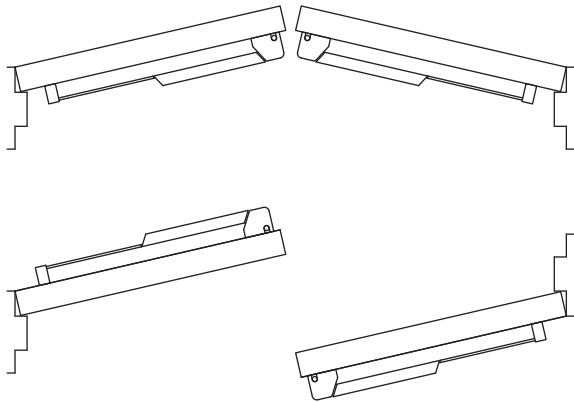
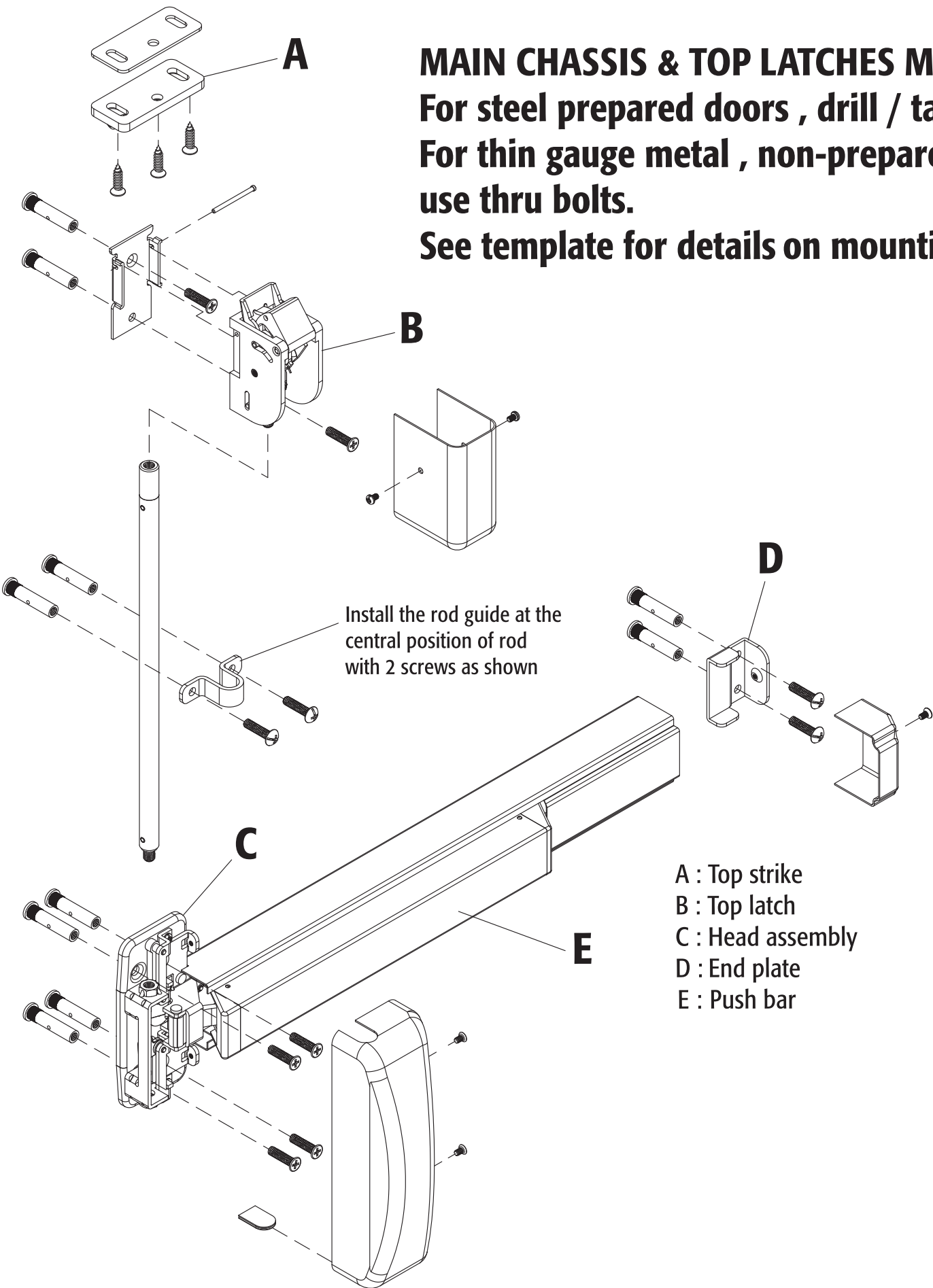
- 1.Lay out parts included in kit.
- 2.Drill 1"(25mm) Dia. hole per detail below in active leaf door edge. Install ②
- 3.Drill 13/16"(95mm) Dia. hole per detail below in in-active leaf door edge.
- 4.Install ① in edge of in-active door.
- 5.Install four screws as shown.



F7100 LESS BOTTOM ROD FIRE RATED EXIT DEVICE-RERVERSIBLE

INSTALLATION INSTRUCTIONS

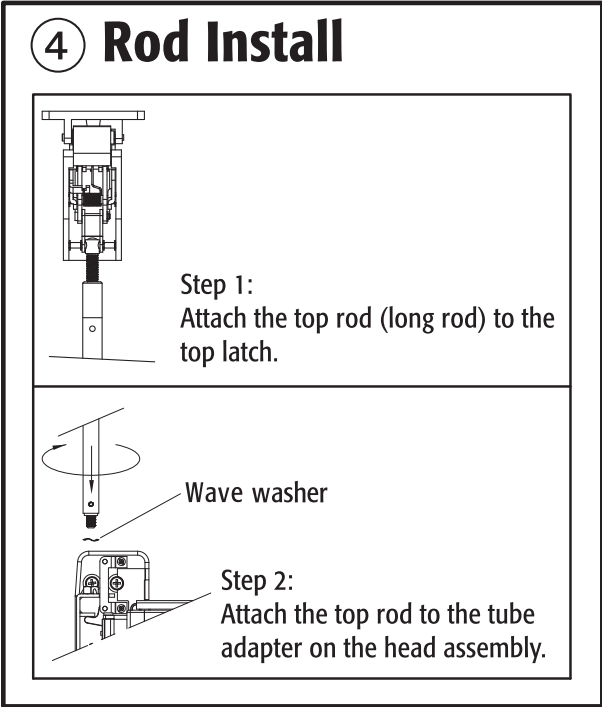
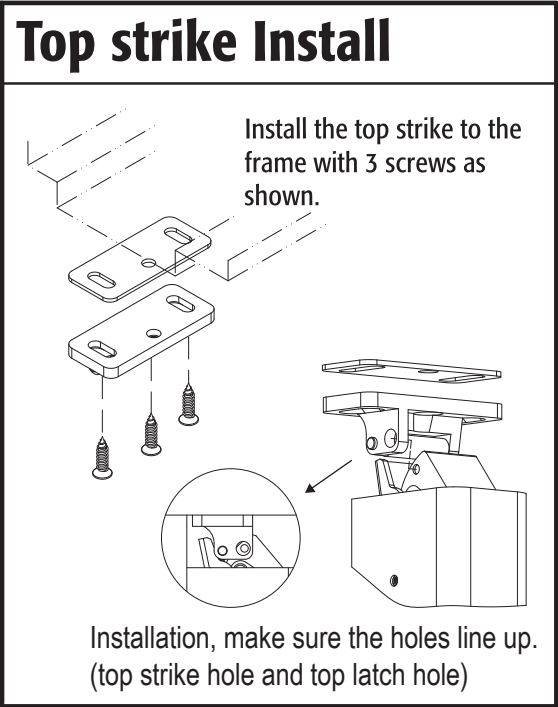
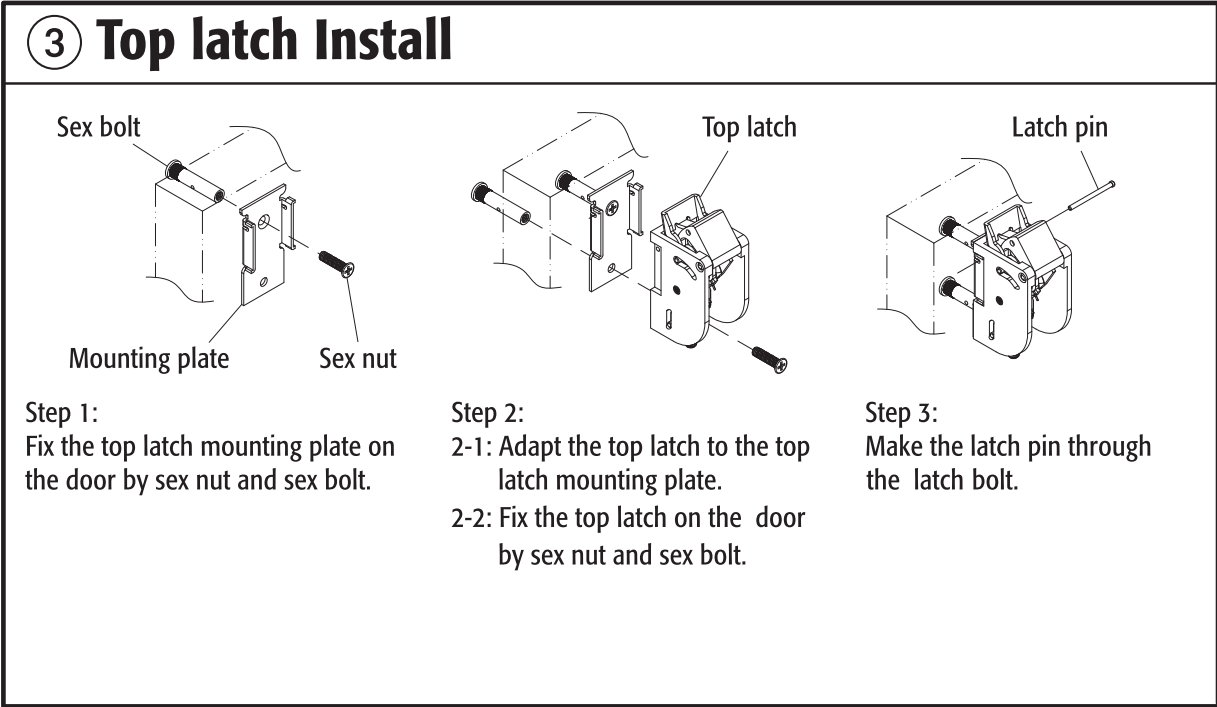
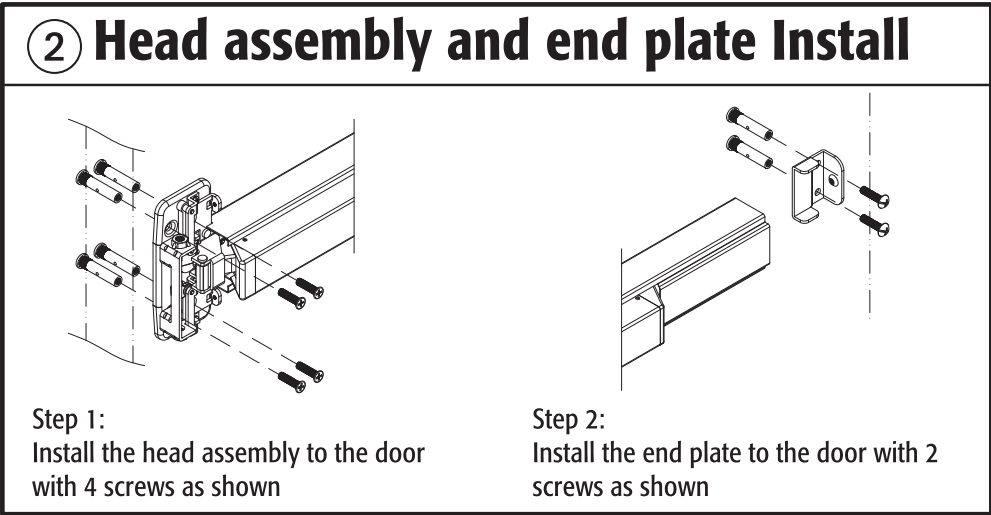
LHR door shown , RHR door opposite



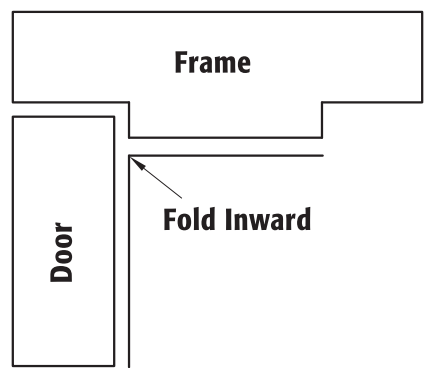
Important Notes: (please read it first)

LBR option for fire exit devices is available using a spring loaded fire bolts installed in each side of the lower door edge. When the device exposed to heat the fire bolts releases and extends into the strike hole in the opposite door , the fire bolt will keep the pair of doors in alignment and closed properly during a fire. The fire rated LBR product is in listed UL 3 hours on metal doors double egress. Fire rated LBR devices must be ordered and installed in pairs of vertical rod devices or must be used in conjunction with an approved automatic or constant latching flush bolt.

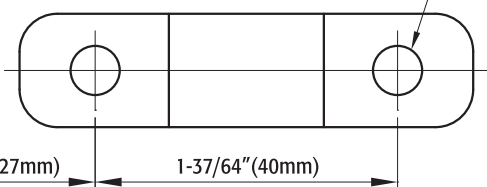
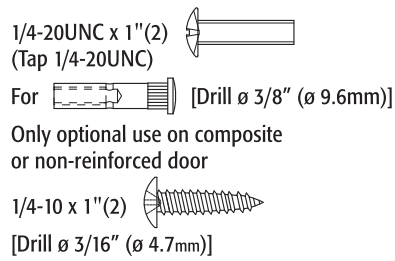
A double door application consists of two LBR devices and two fire bolts. The fire bolts should be installed in each side of the lower door edge to maintain fire listing. Refer to the fire bolt installation instructions for further details.



7100 LESS BOTTOM ROD DEVICE TEMPLATE

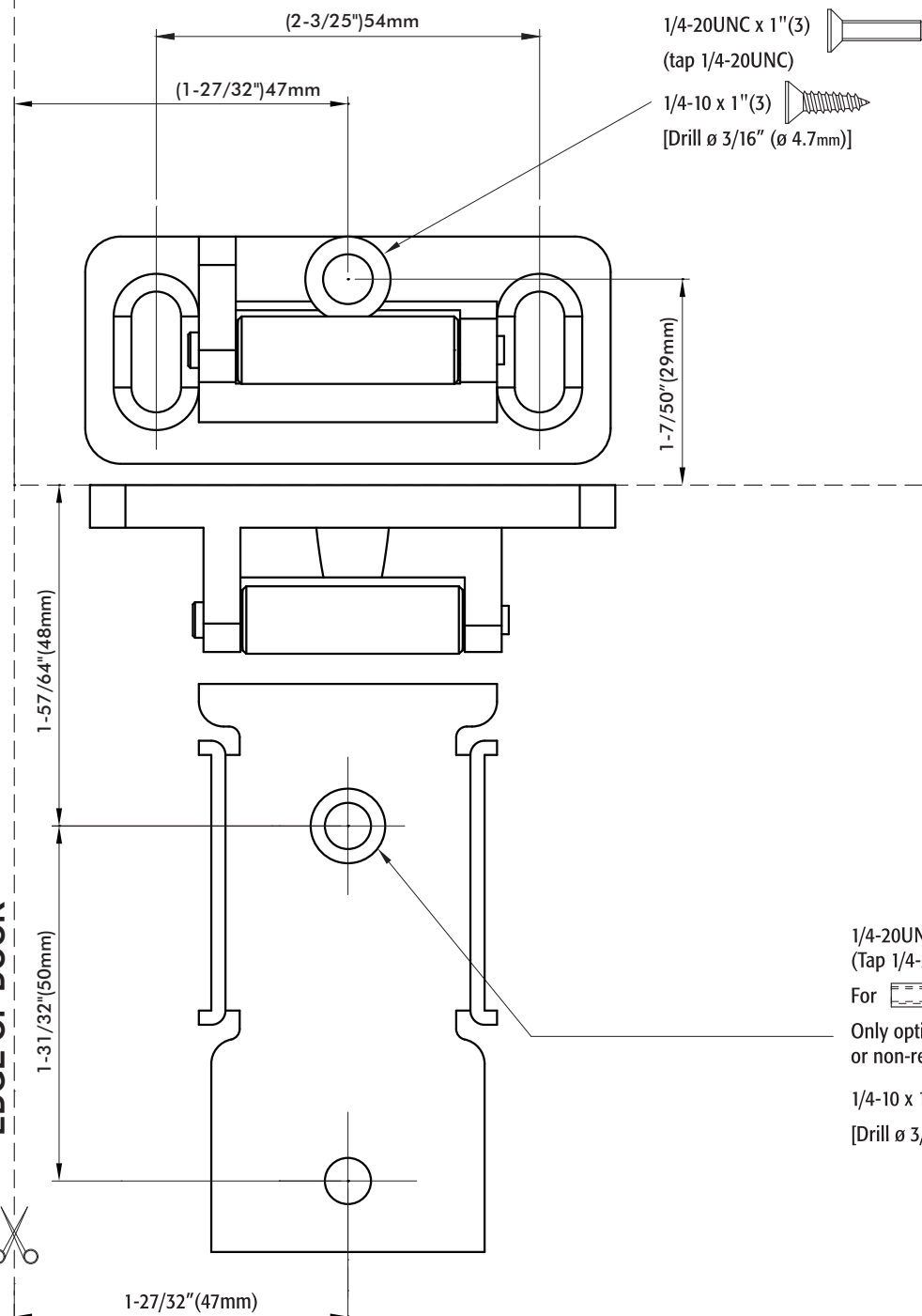


Tube fitting template



Tube fitting template

Top strike/latch template



Main chassis template

