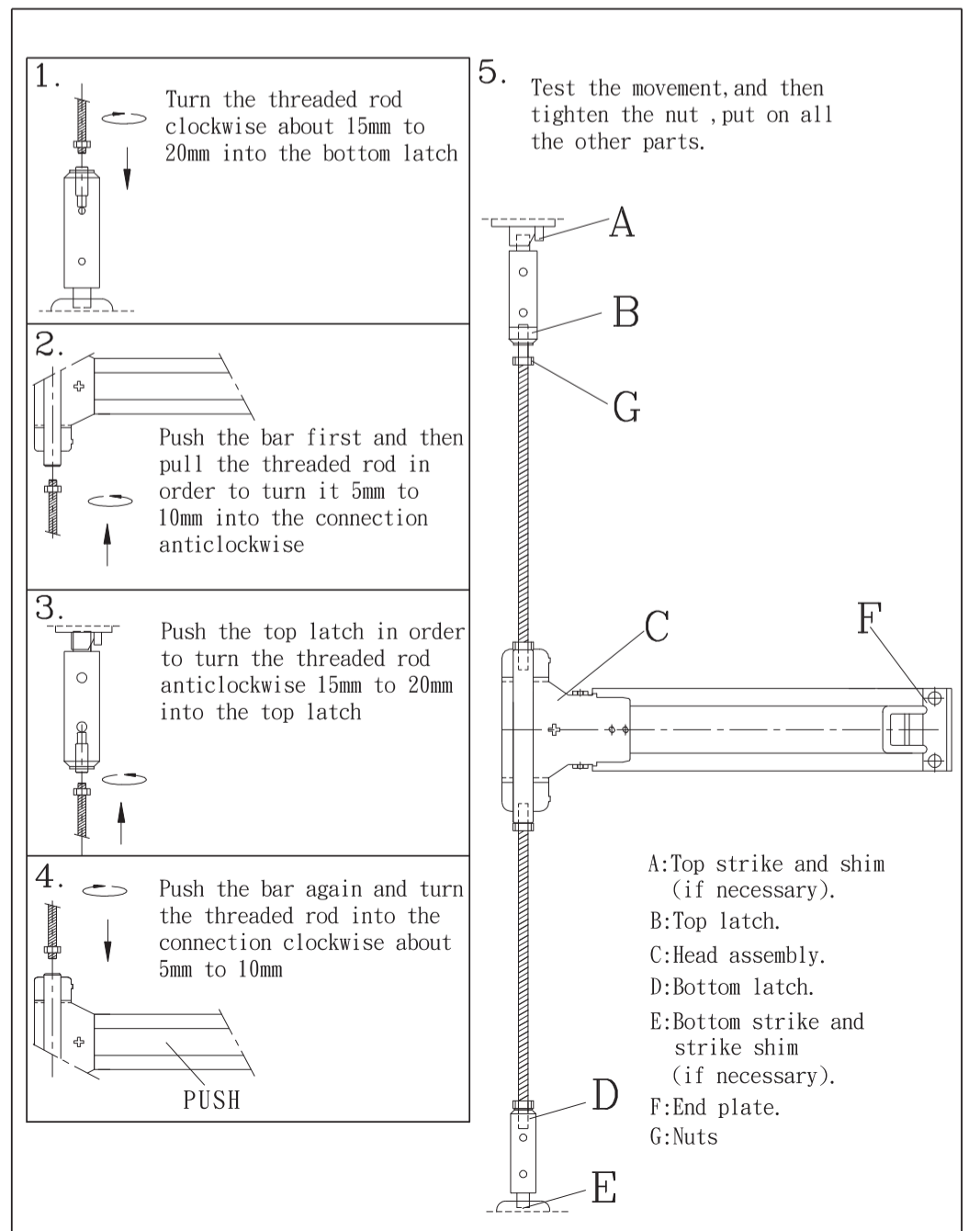
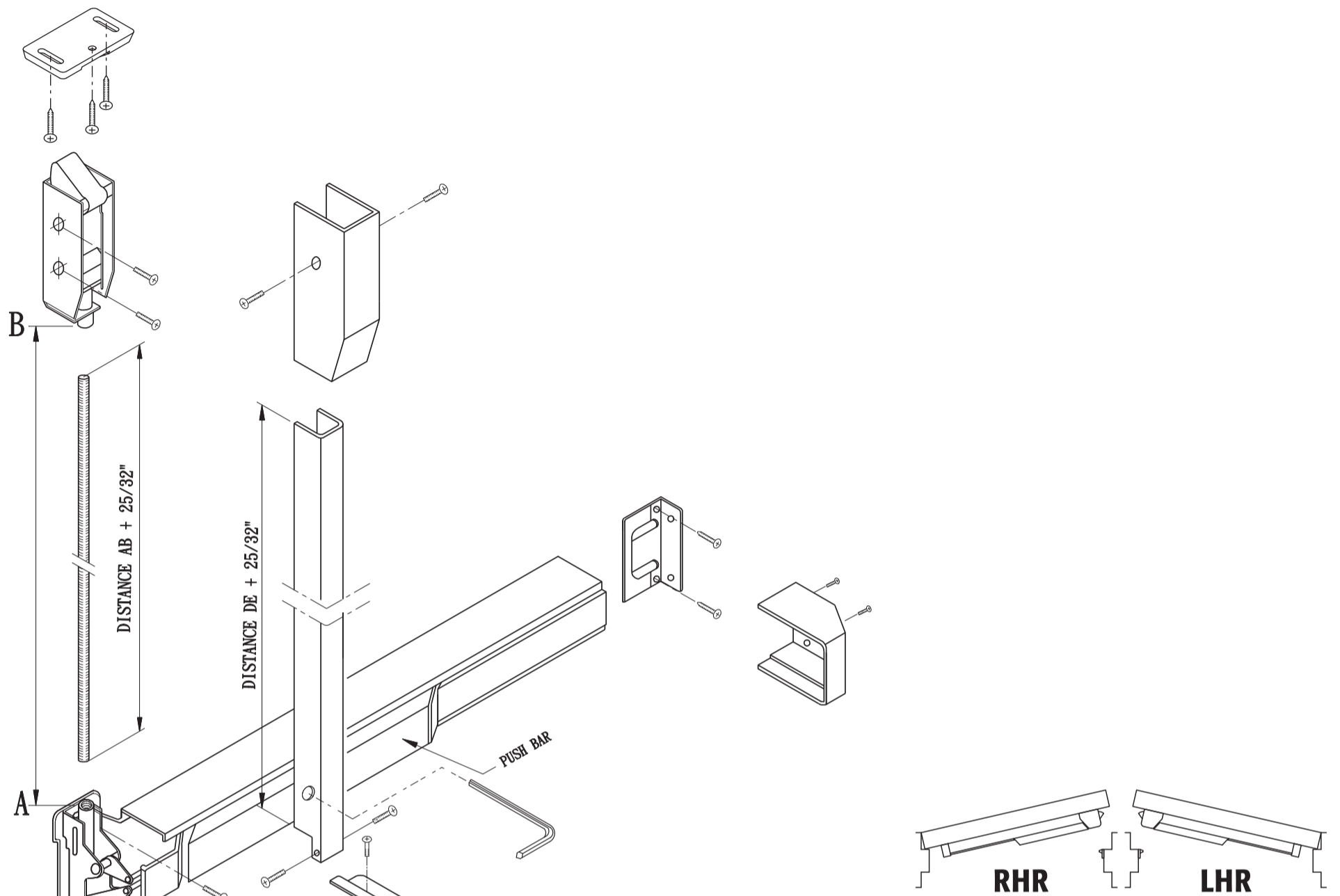
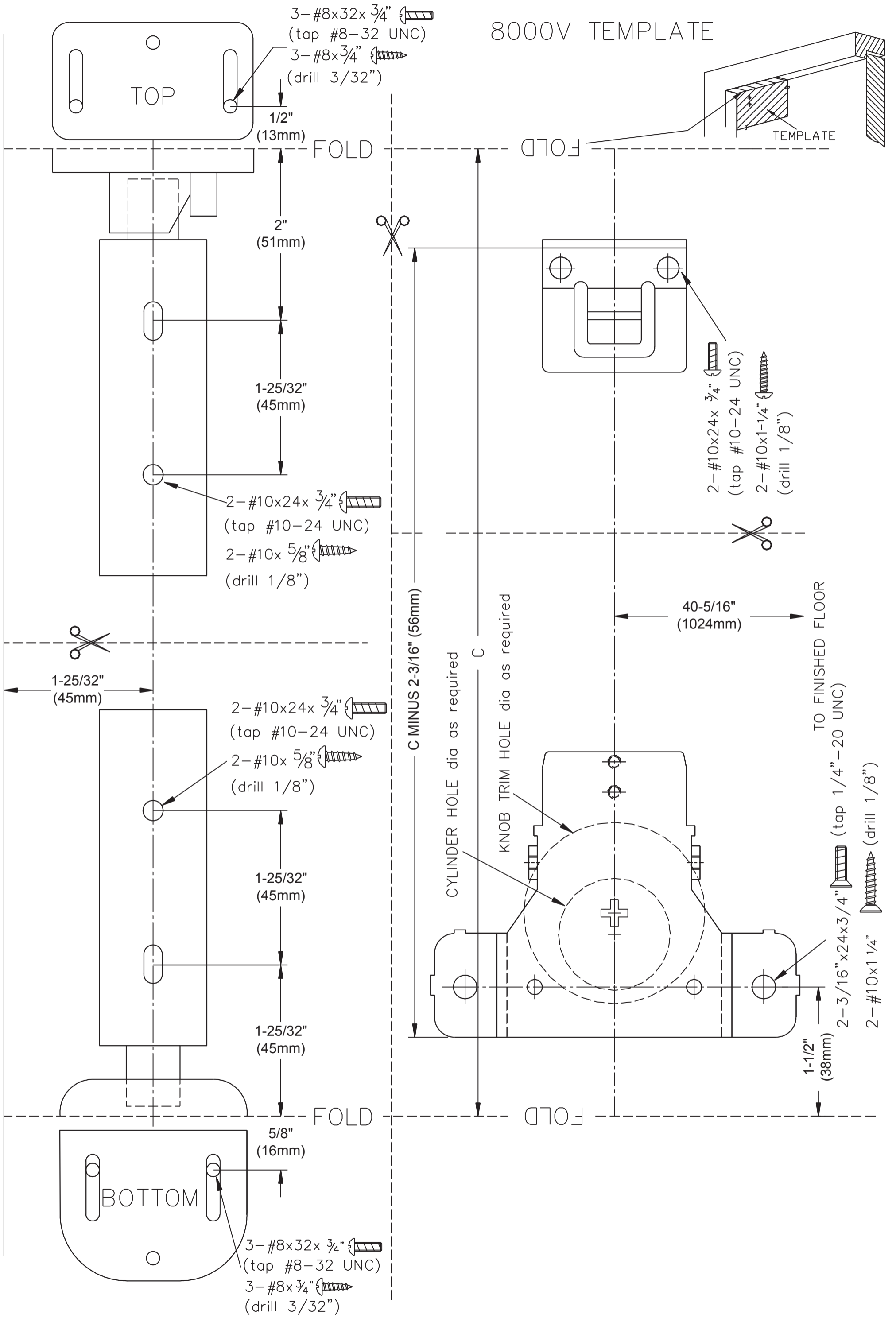


# 8000V VERTICAL ROD EXIT DEVICE-RERVERSIBLE INSTALLATION INSTRUCTIONS

LHR door shown , RHR door opposite



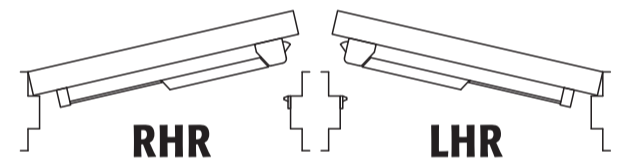
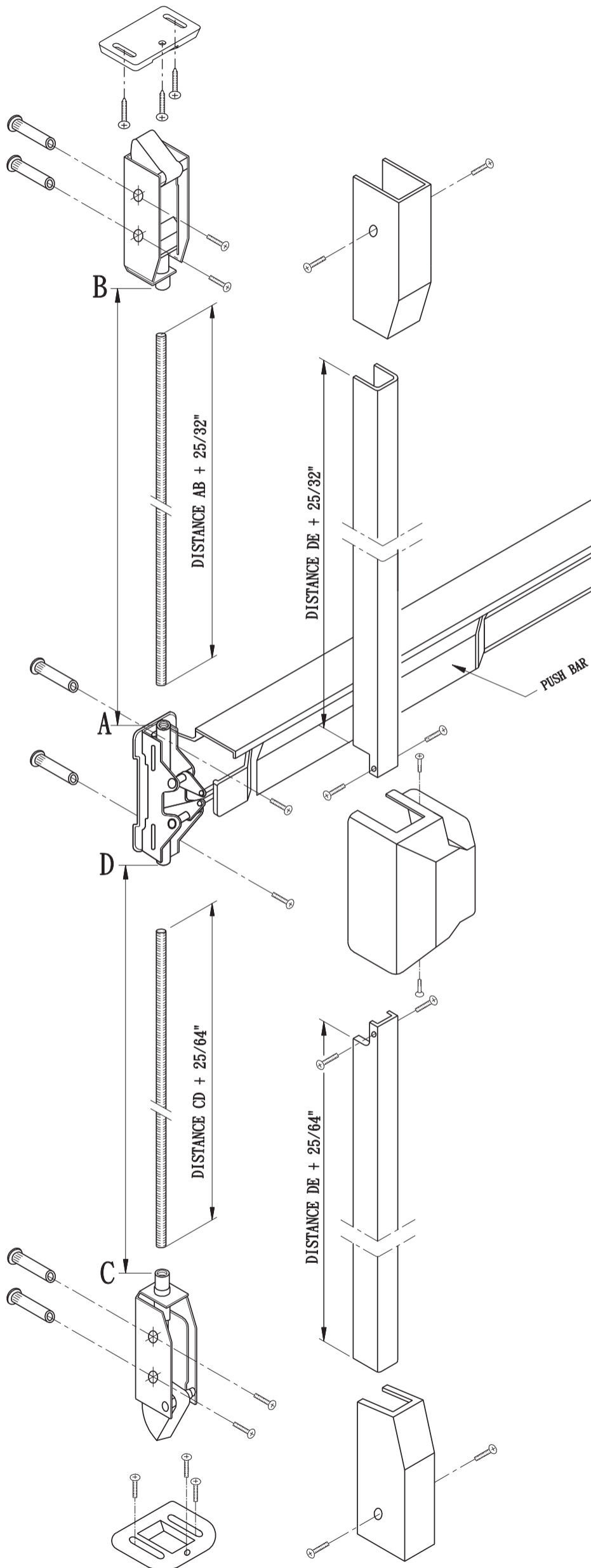
# 8000V TEMPLATE



# F8000V VERTICAL ROD FIRE RATED EXIT DEVICE-RERVERSIBLE

## INSTALLATION INSTRUCTIONS

LHR door shown , RHR door opposite



<p><b>1.</b> Turn the threaded rod clockwise about 15mm to 20mm into the bottom latch</p>	<p><b>5.</b> Test the movement, and then tighten the nut, put on all the other parts.</p> <p>A: Top strike and shim (if necessary).                  B: Top latch.                  C: Head assembly.                  D: Bottom latch.                  E: Bottom strike and strike shim (if necessary).                  F: End plate.                  G: Nuts</p>
<p><b>2.</b> Push the bar first and then pull the threaded rod in order to turn it 5mm to 10mm into the connection anticlockwise</p>	
<p><b>3.</b> Push the top latch in order to turn the threaded rod anticlockwise 15mm to 20mm into the top latch</p>	
<p><b>4.</b> Push the bar again and turn the threaded rod into the connection clockwise about 5mm to 10mm</p>	
<p><b>PUSH</b></p>	

# F8000V TEMPLATE

