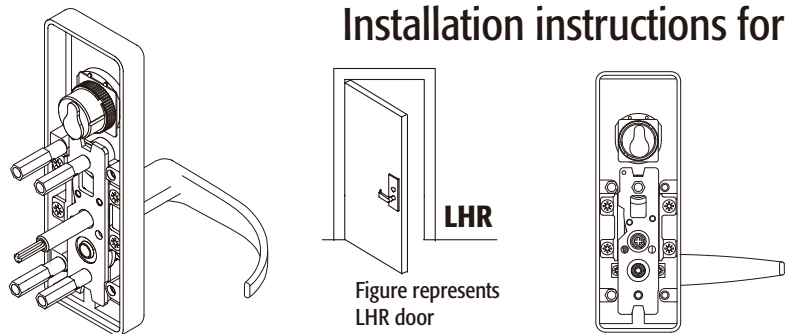


size:A4(210X297mm)

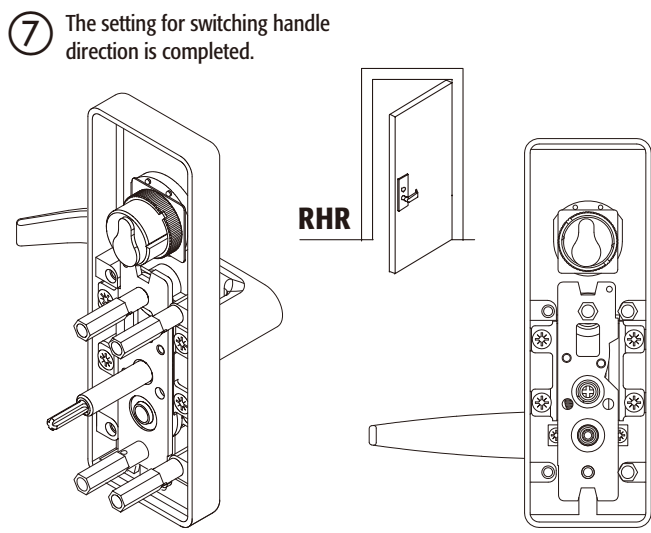
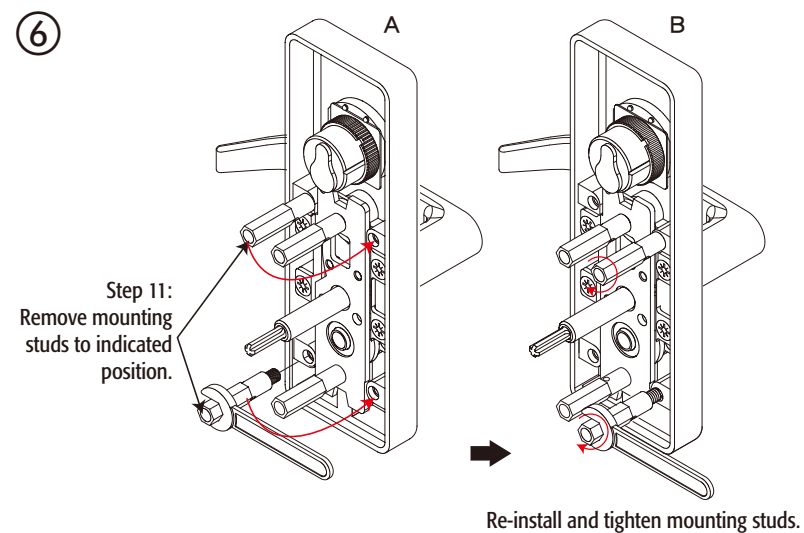
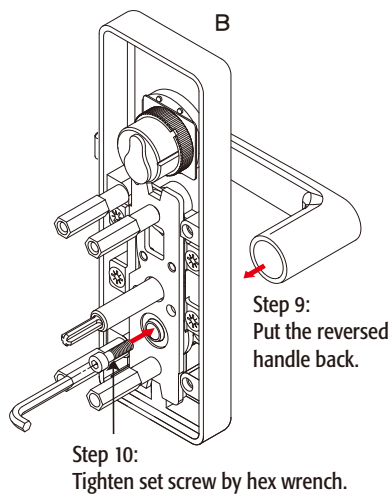
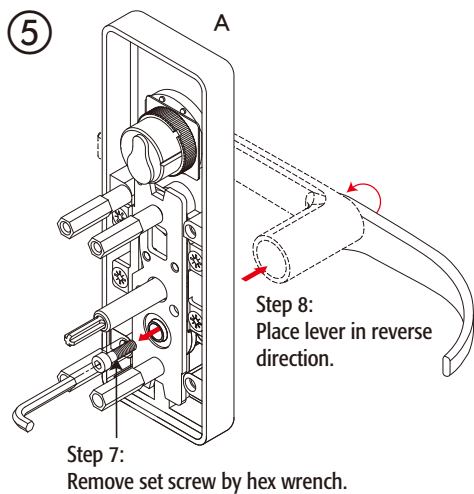
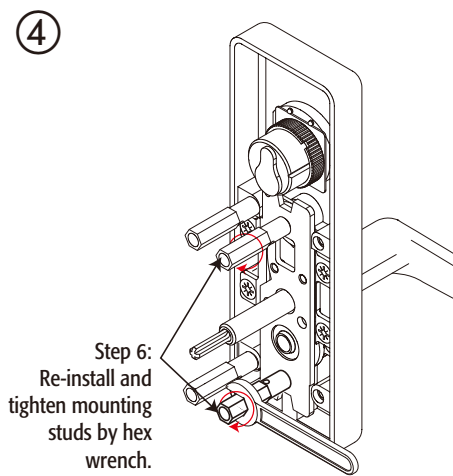
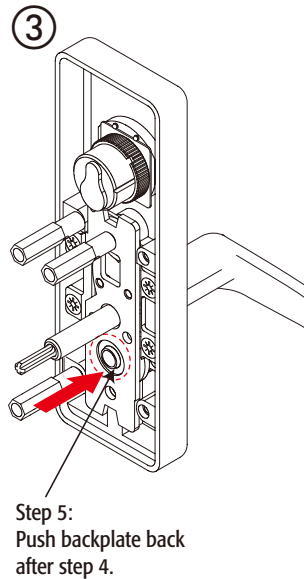
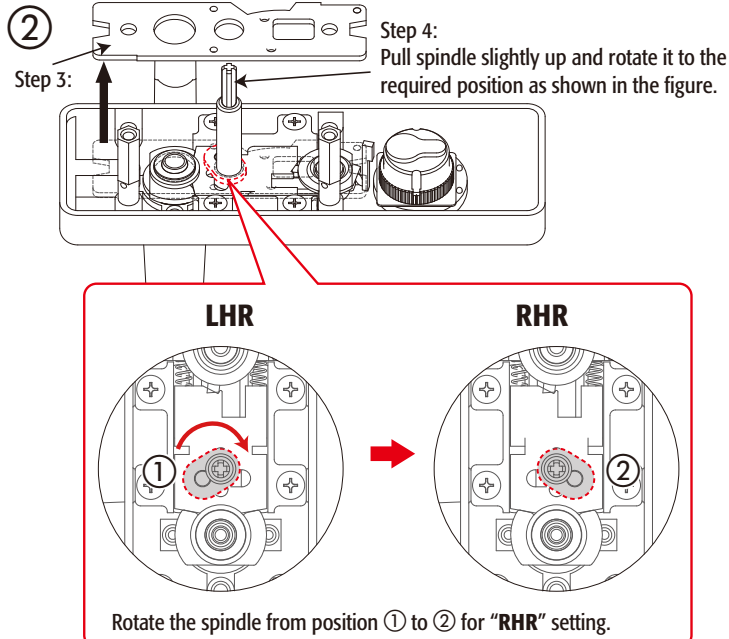
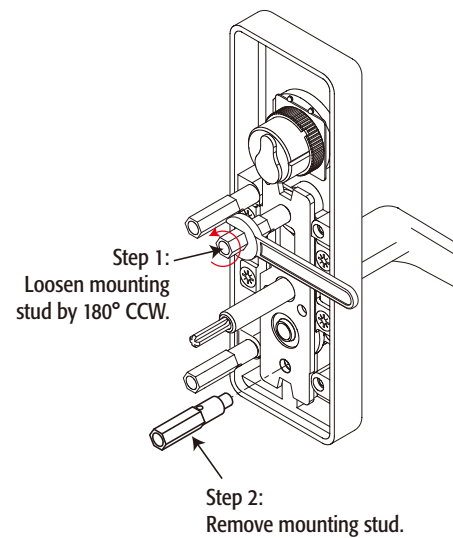
front

VERTICAL TYPE PANIC EXIT DEVICE
Installation instructions for changing lever handing



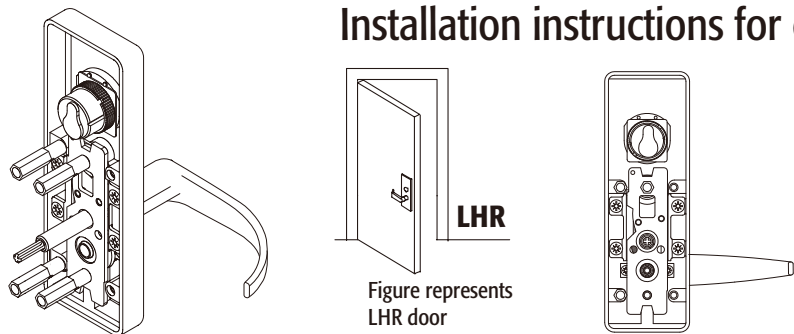
CAUTION:
The preset lever handle is "LHR".
Please follow the steps below if "RHR" is needed.

① **REQUIRED:**
Handle must be attached before loosening mounting studs.

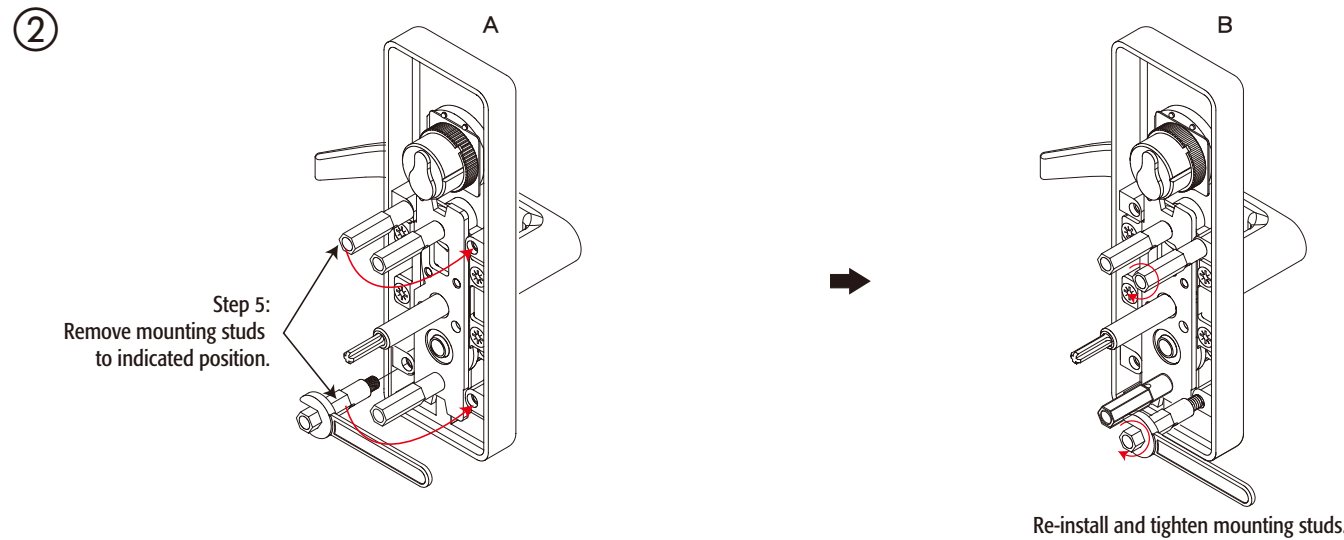
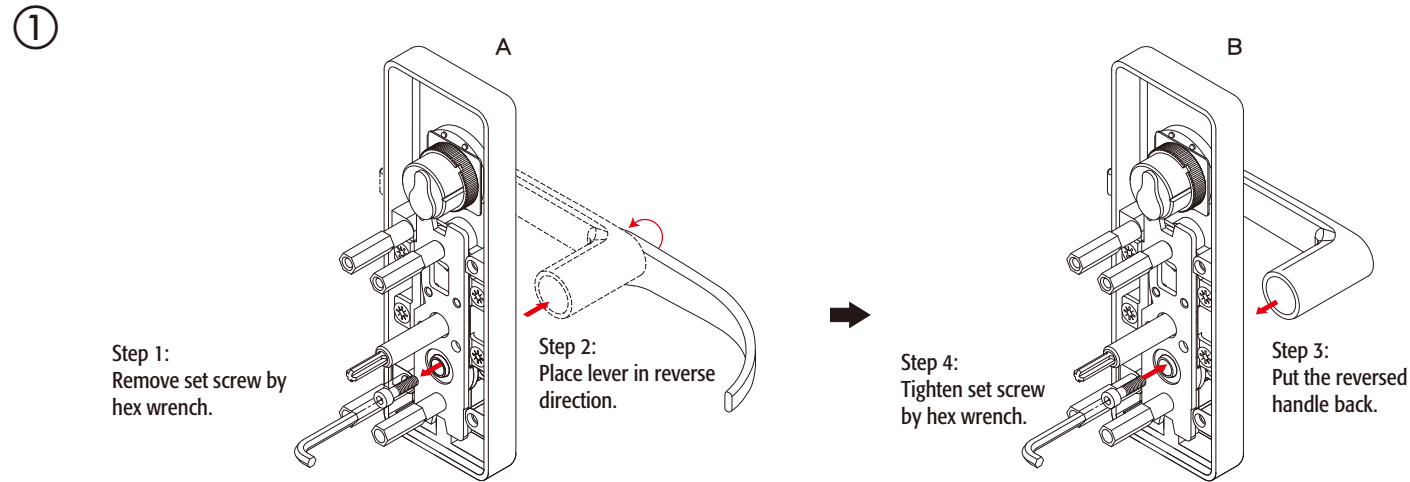


back

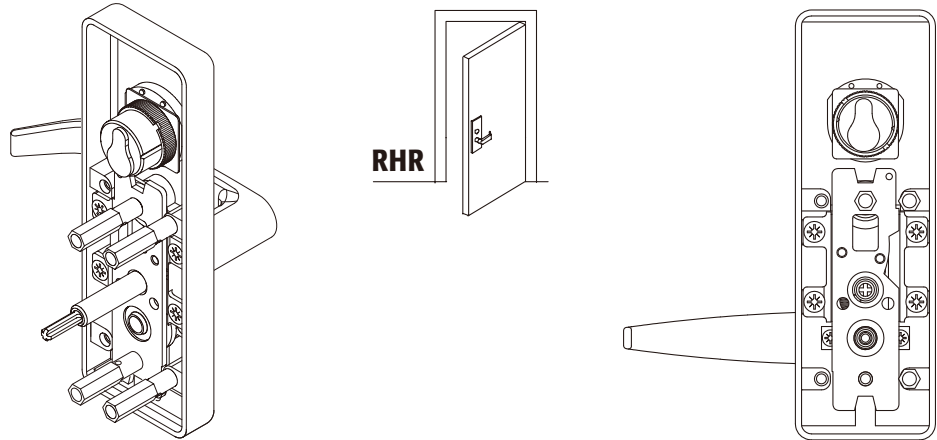
RIM TYPE PANIC EXIT DEVICE
Installation instructions for changing lever handing



CAUTION:
The preset lever handle is "LHR".
Please follow the steps below if "RHR" is needed.

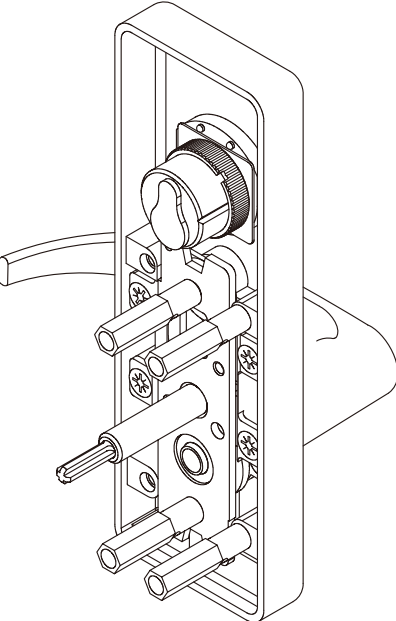
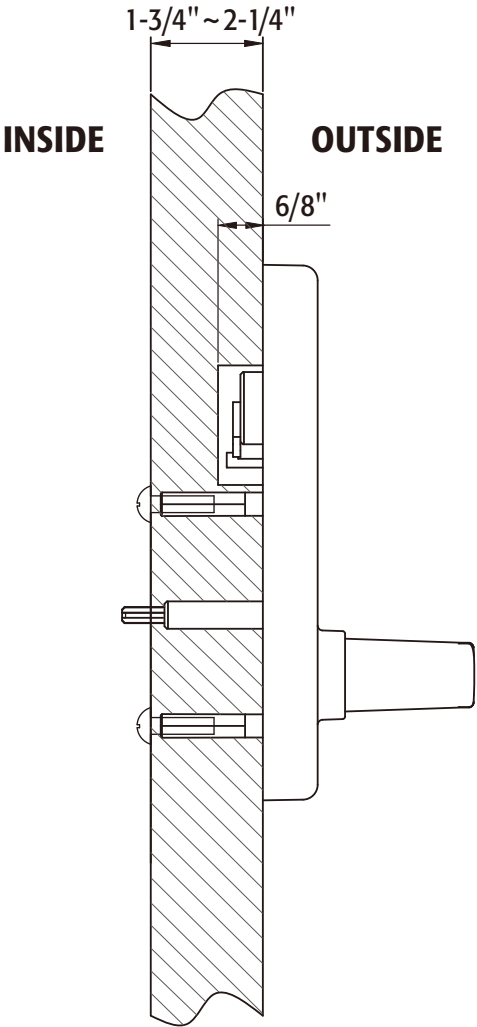


③ The setting for switching handle direction is completed.



front

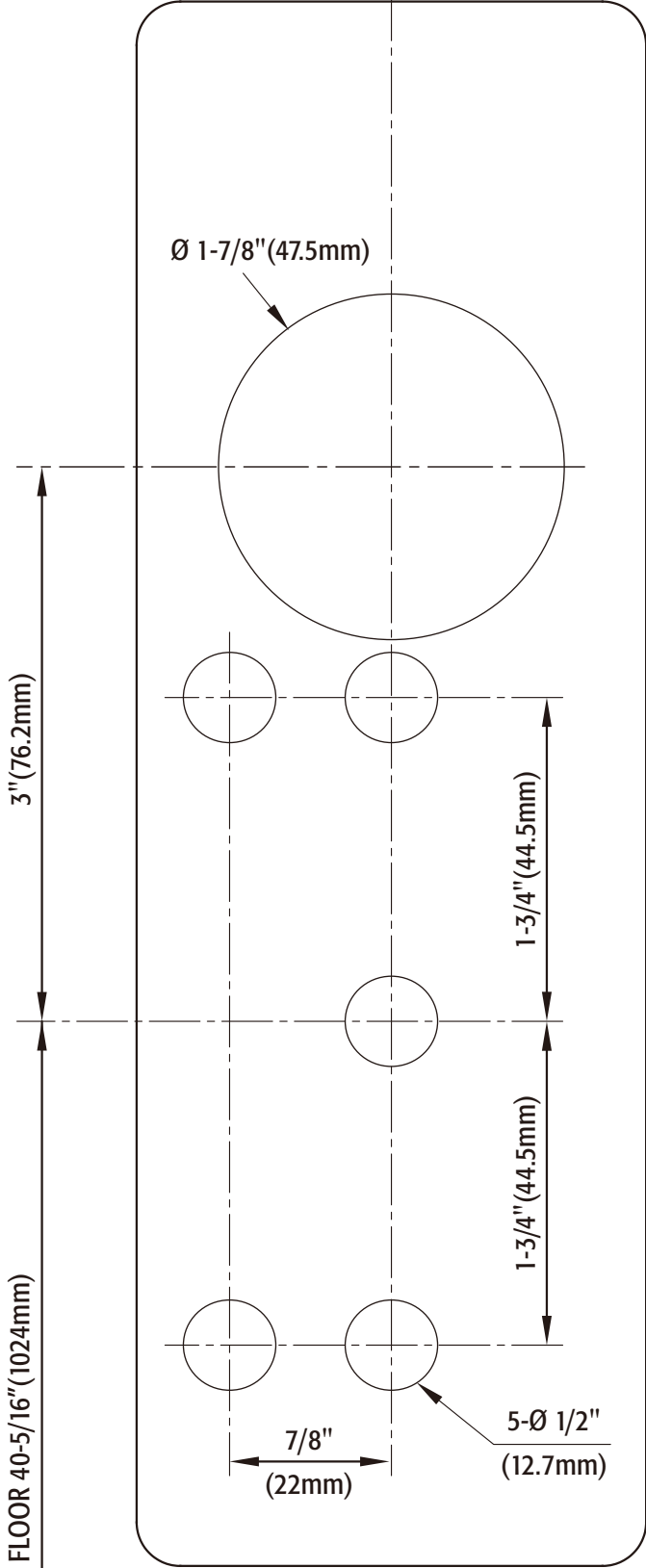
- OUTSIDE TRIM INSTALLATION:**
- 1. Determine the handing of the door and select the matching template below.
 - 2. Ø1-7/8" hole on outside of door will only need to be drilled for the classroom function.



EDGE OF DOOR

Per exit device instructions

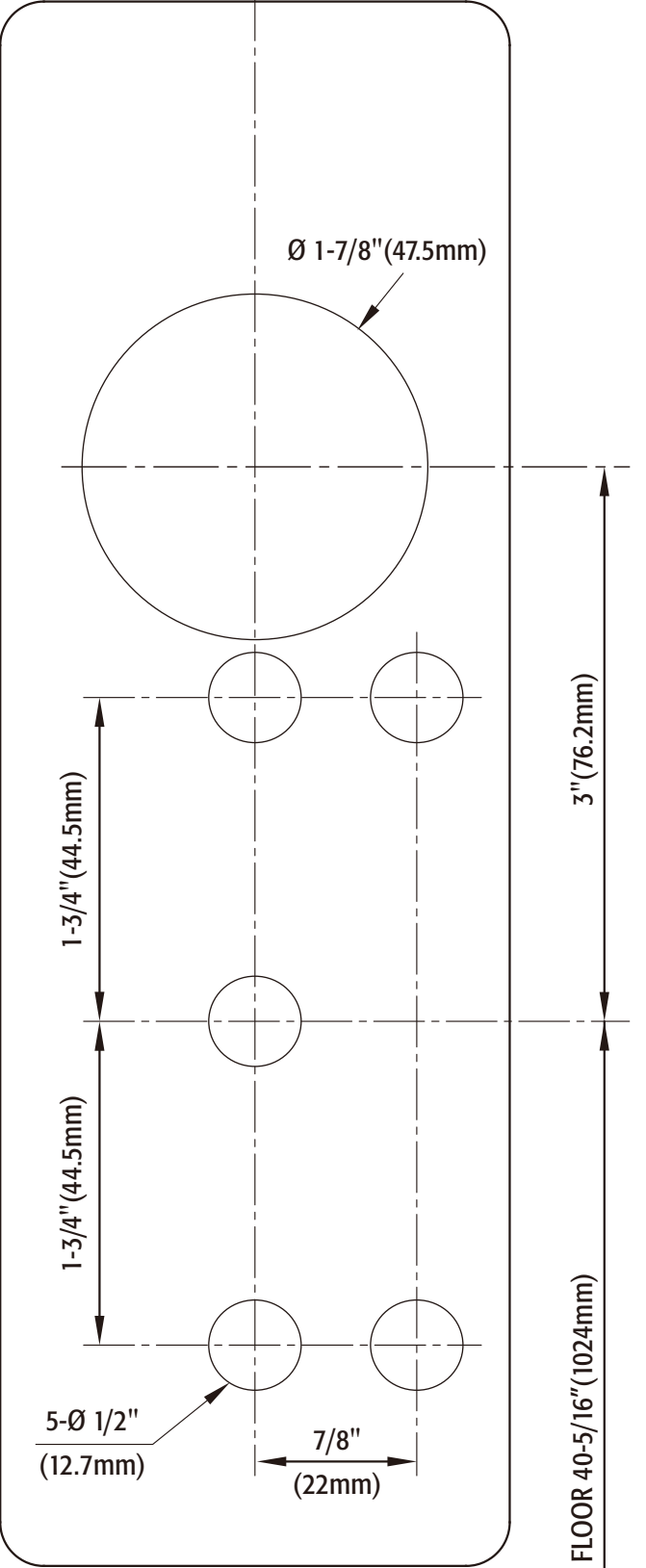
RHR



back

LHR

Per exit device instructions



EDGE OF DOOR

