

INSTALLATION INSTRUCTIONS FOR SURFACE MOUNTED COORDINATORS

Note: Install Coordinator before any other hardware except hinges....

1. Close door against stop. Locate active and inactive strike as shown in Fig. 1
2. Locate Coordinators shown in Fig. 2 & 4 Drill mounting hole with #10 drill. Install 12-24 thread forming screws to hold coordinator in correct position before drilling other holes. As to the installing hole dimensions in different sizes, varied from the door sizes, see Fig. 2
3. As may be varied from the door sizes, installed Filler Bar as shown in Fig. 3 to complete fill opening between end of Coordinator and face of inactive door stop.

Fig. 1 ACTIVE AND INACTIVE DOOR STRIKE PLATES

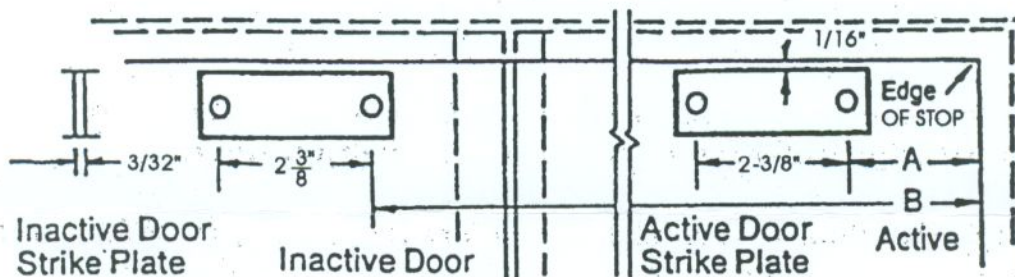
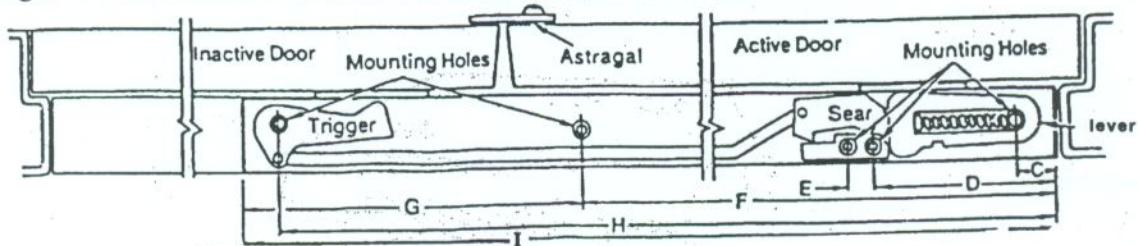


Fig.2 COORDINATOR WITH DOORS IN CLOSED POSITION



LENGTH OF HOUSING	DIMENSIONS IN INCHES									
	A	B	C	D	E	F	G	H	I	J DIMENSION
32"	1 1/4"	27 1/2"	7/8"	4"	3/4"			31"	32"	VARIES PER K DIMENSION
42"	1 1/4"	37 1/2"	7/8"	4"	3/4"			41"	42"	
52"	1 1/4"	47 1/2"	7/8"	4"	3/4"	27 5/8"	24 3/8"	51"	52"	
60"	1 1/4"	55 1/2"	7/8"	4"	3/4"	27 5/8"	32 3/8"	59"	60"	

Fig. 3 COORDINATOR WITH FILLER PLATE DOORS IN OPEN POSITION.

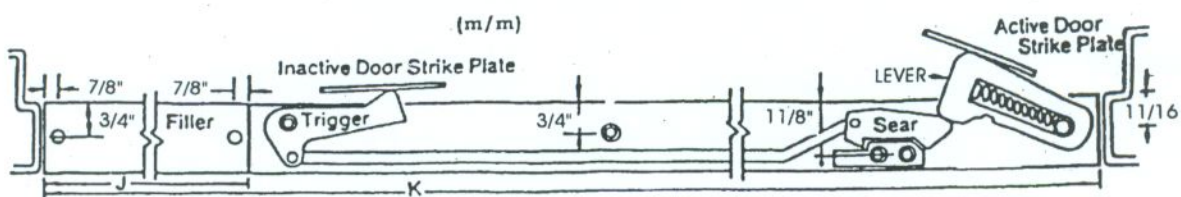
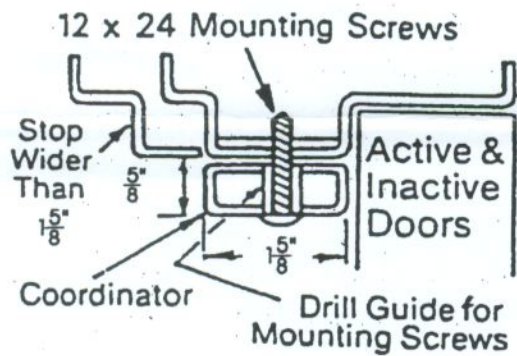
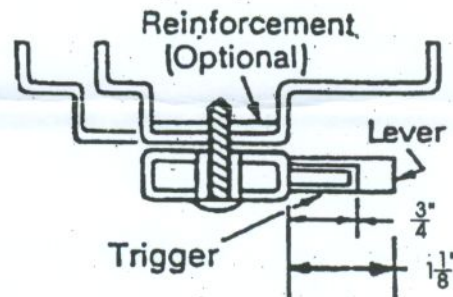


Fig. 4 DOORS IN CLOSED POSITION



**Fig. 5 DOORS IN OPEN POSITION
LEVER AND TRIGGER PROJECTIO**



Note: Pre-set tension on lever torsion spring holds active door open until trigger depressed by closing of inactive door.

If Active door overrides lever before trigger depressed, increase tension as shown in

Fig. 6

