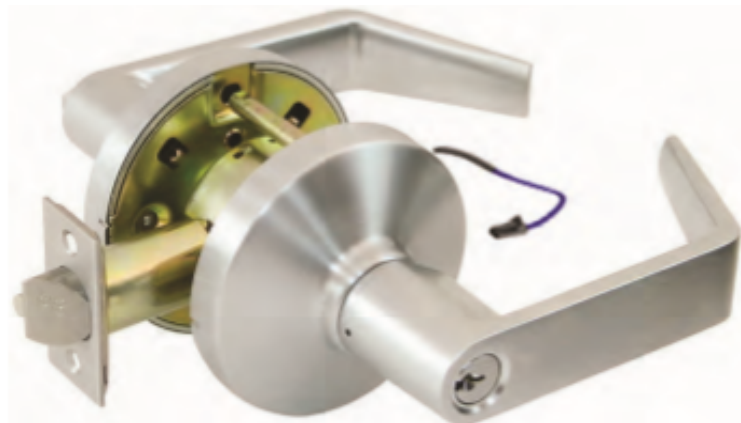


Electrified Storeroom

Annapolis FYT Series



FEATURES & OPTIONS

Electrical Specification

Voltage: Dual 12/24VDC Input
Current: 600/300mA @ 12/24VDC
REX Output: SPDT 3 Amps @ 30VDC

Function

- Fail Safe
- Fail Secure

Latch Backset

Exterior: 2-3/4" UL deadlatch standard
(other options available)

Faceplate

1-1/8" x 2-1/4" square corner standard
(other options available)

Bolt

1/2" throw

Door Thickness

Fit 1-3/8" to 2-1/4"

Cylinder

6-pin SC "C" keyway solid brass cylinder standard

Also available in:
5-pin KW keyway

6 & 7-pin small format I/C core, Best A2 keyway

Strike Plate

4-7/8" x 1-1/4" ASA strike standard
(other options available)

Handing

Reversible for left or right hand doors

SPECIFICATIONS

Lockset: Lock or latchset shall be by **PAMEX** model # **FY Series**. All locks shall be non-handed and provide with 3 hour rated solid brass plain or deadlatch. Lock chassis shall have heavy duty lever spring return rose assembly with clutch mechanism and thru bolts for proper installation.

CODE COMPLIANCE

- Meets ANSI/BHMA A156.2, Series 4000, Grade 1
- Meets ADA Requirements
- UL 3-Hour Fire Rated



ADA



WARRANTY

- Lifetime mechanical warranty
- Five years finish warranty

FINISHES

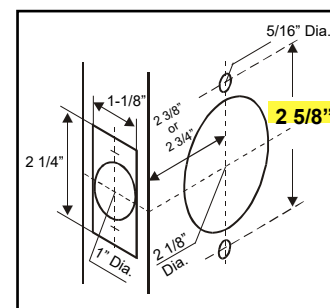
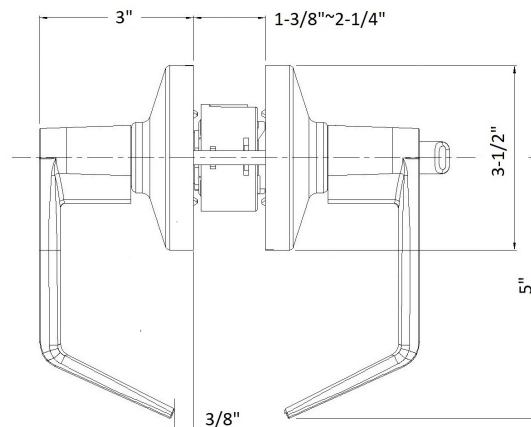
(other finishes available upon request with lead-time)

- US10B - 613 - Oil Rubbed Bronze
- US26D - 626 - Satin Chrome
- US19 - 622 - Matte Black
- US15 - 619 - Satin Nickel

FUNCTIONS

Electrified Storeroom

Outside lever always locked but free turning and unlocked electronically or manually by key.
Inside lever always free.



Door preparation