

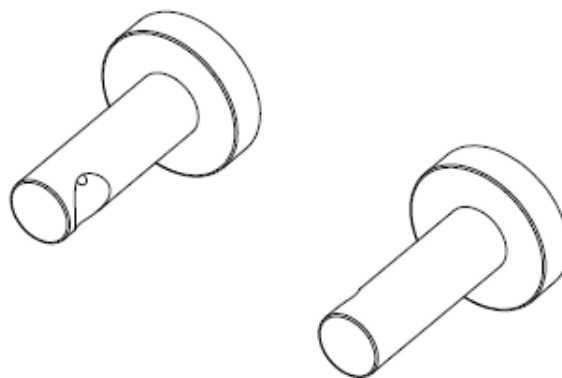
### Towel Bar Post (5/8" round bar)

Model: BC12-15800

#### Features

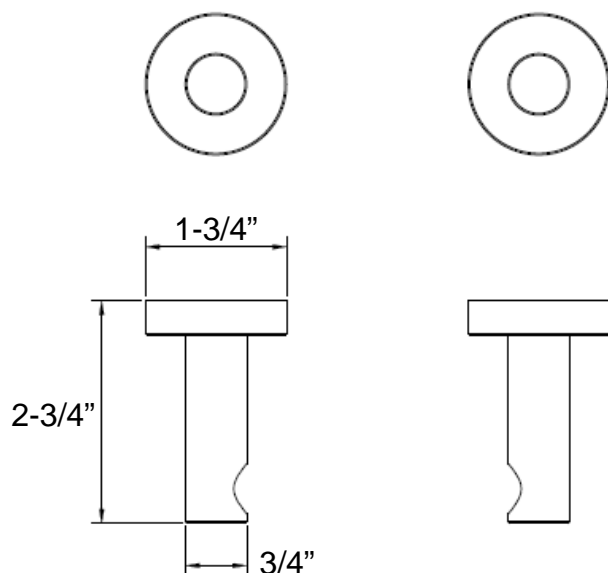
- Material: Zinc Die-cast
- Concealed Surface Mount Application
- Provided with
  - Mounting Plate
  - Plastic Anchors x 4
  - Steel Phillips Head Screws #8 x 1-1/4"
- Projection: 2-3/4" from Mounting Surface
- Overall Size: 1-3/4" x 1-3/4"

*Solano*  
Collection



#### Available Finish

- ☐ Satin Nickel
- ☐ Polished Chrome



### 18" x 5/8" Towel Bar (round bar)

Model: BC12-15818

#### Features

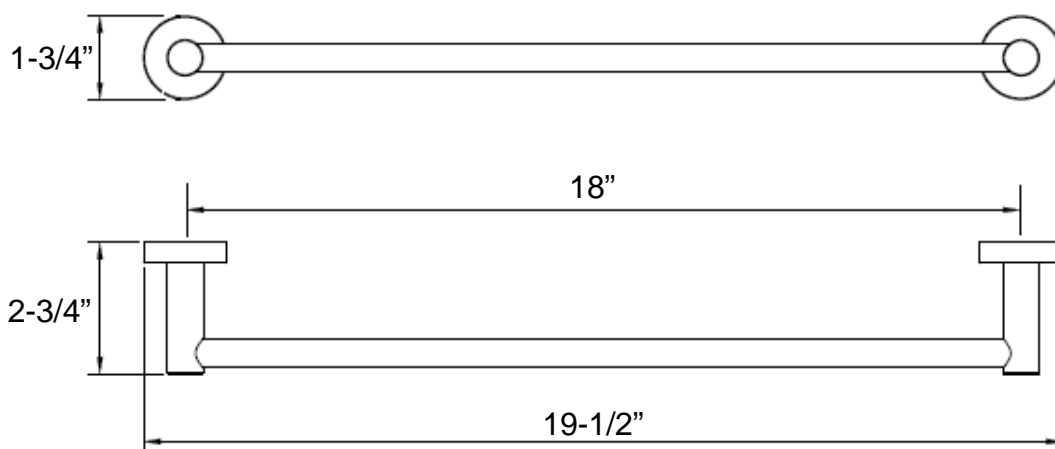
- Material: Zinc Die-cast
- Concealed Surface Mount Application
- Provided with
  - Mounting Plate
  - Plastic Anchors x 4
  - Steel Phillips Head Screws #8 x 1-1/4"
- Projection: 2-3/4" from Mounting Surface
- Overall Size: 19-1/2" x 1-3/4"

*Solano*  
Collection



#### Available Finish

- ☐ Satin Nickel
- ☐ Polished Chrome



### 24" x 5/8" Towel Bar (round bar)

Model: BC12-15824

#### Features

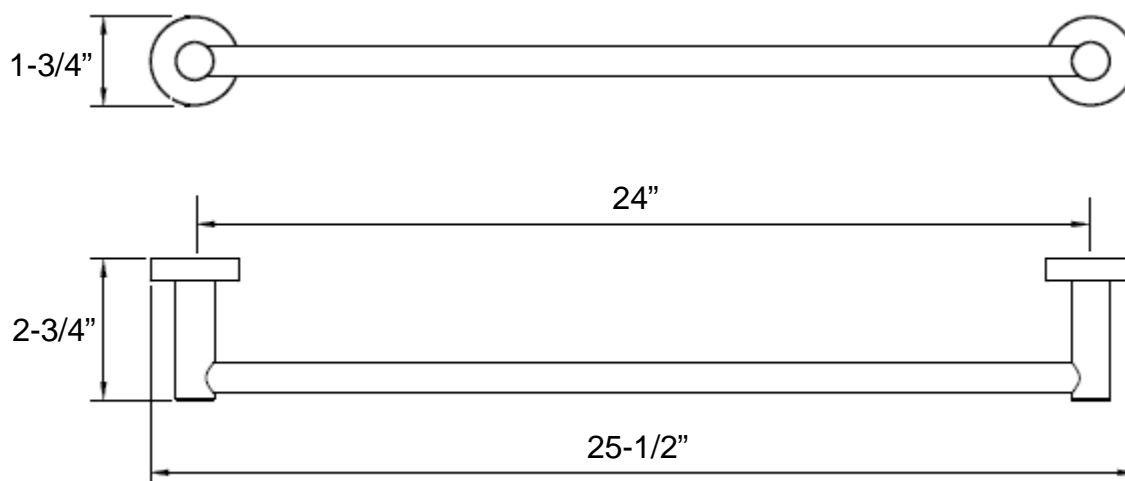
- Material: Zinc Die-cast
- Concealed Surface Mount Application
- Provided with
  - Mounting Plate
  - Plastic Anchors x 4
  - Steel Phillips Head Screws #8 x 1-1/4"
- Projection: 2-3/4" from Mounting Surface
- Overall Size: 25-1/2" x 1-3/4"

*Solano*  
Collection



#### Available Finish

- ☐ Satin Nickel
- ☐ Polished Chrome



### 30" x 5/8" Towel Bar (round bar)

Model: BC12-15830

#### Features

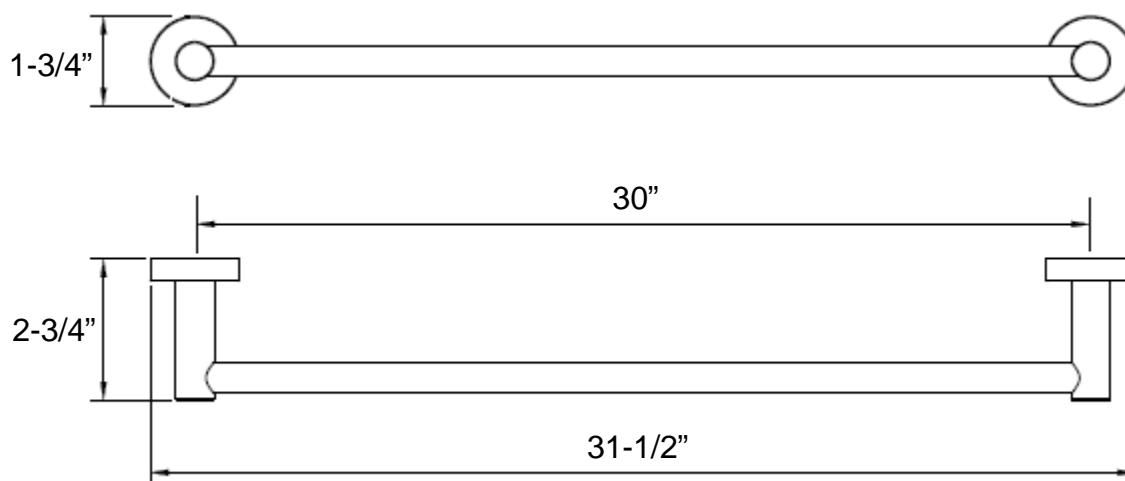
- Material: Zinc Die-cast
- Concealed Surface Mount Application
- Provided with
  - Mounting Plate
  - Plastic Anchors x 4
  - Steel Phillips Head Screws #8 x 1-1/4"
- Projection: 2-3/4" from Mounting Surface
- Overall Size: 31-1/2" x 1-3/4"

*Solano*  
Collection



#### Available Finish

- ☐ Satin Nickel
- ☐ Polished Chrome



### Single Robe Hook

Model: BC12-21

#### Features

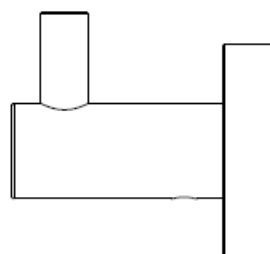
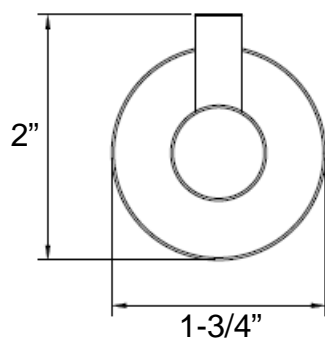
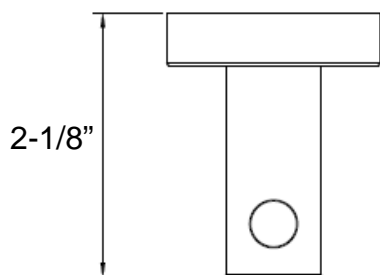
- Material: Zinc Die-cast
- Concealed Surface Mount Application
- Provided with
  - Mounting Plate
  - Plastic Anchors x 2
  - Steel Phillips Head Screws #8 x 1-1/4"
- Projection: 2-1/8" from Mounting Surface
- Overall Size: 1-3/4" x 2"

*Solano*  
Collection



#### Available Finish

- ☐ Satin Nickel
- ☐ Polished Chrome



### Metal Towel Ring

Model: BC12-32

#### Features

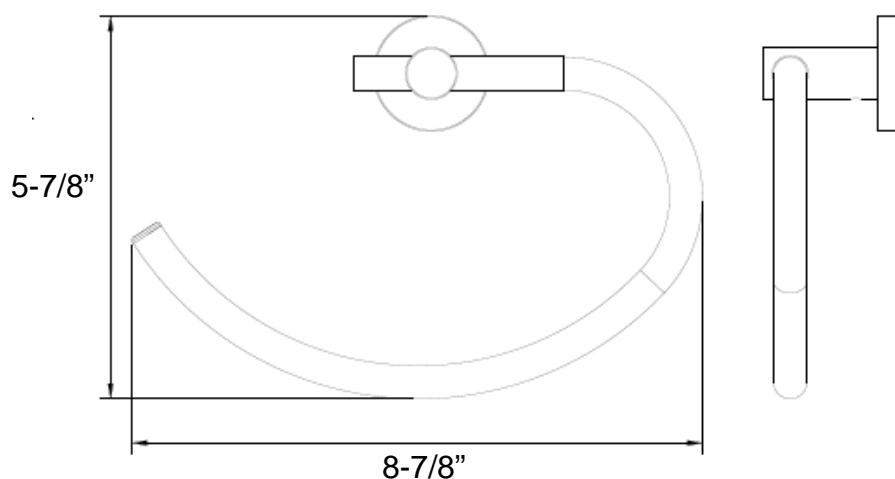
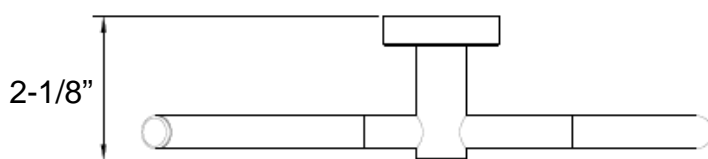
- Material: Zinc Die-cast
- Concealed Surface Mount Application
- Provided with
  - Mounting Plate
  - Plastic Anchors x 2
  - Steel Phillips Head Screws #8 x 1-1/4"
- Projection: 2-1/8" from Mounting Surface
- Overall Size: 8-7/8" x 5-7/8"

*Solano*  
Collection



#### Available Finish

- ☐ Satin Nickel
- ☐ Polished Chrome



## Surface Paper Holder

Model: BC12-42

### Features

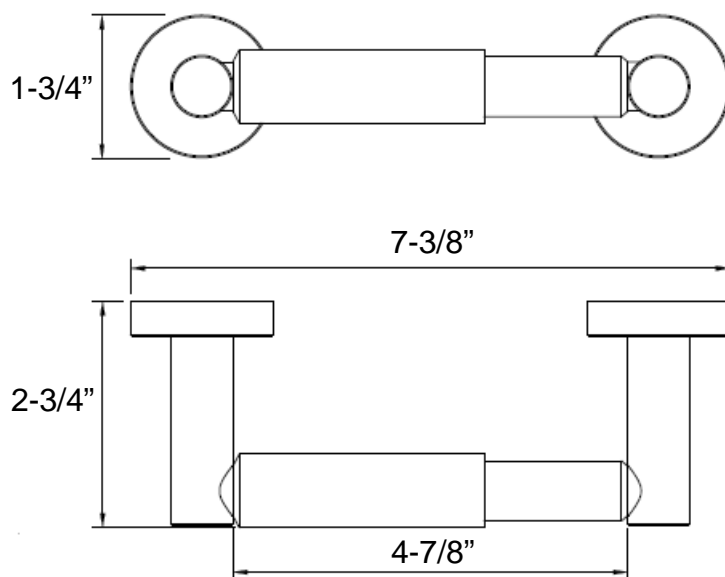
- Material: Zinc Die-cast
- Concealed Surface Mount Application
- Provided with
  - Mounting Plate
  - Plastic Anchors x 4
  - Steel Phillips Head Screws #8 x 1-1/4"
- Projection: 2-3/4" from Mounting Surface
- Overall Size: 7-3/8" x 1-3/4"

*Solano*  
Collection



### Available Finish

- ☐ Satin Nickel
- ☐ Polished Chrome



### European-Style Paper Holder

Model: BC12-43

#### Features

- Material: Zinc Die-cast
- Concealed Surface Mount Application
- Provided with
  - Mounting Plate
  - Plastic Anchors x 2
  - Steel Phillips Head Screws #8 x 1-1/4"
- Projection: 2-1/8" from Mounting Surface
- Overall Size: 5-7/8" x 4"

*Solano*  
Collection



#### Available Finish

- ☐ Satin Nickel
- ☐ Polished Chrome

