

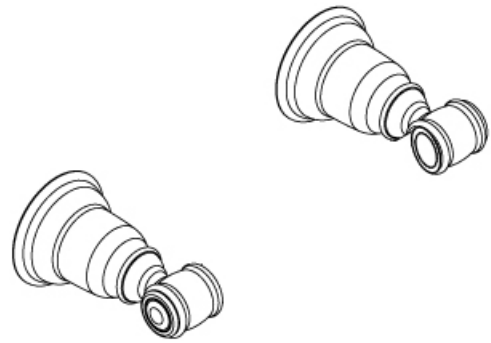
Towel Bar Post (3/4" round)

Model: BC10-13800

Features

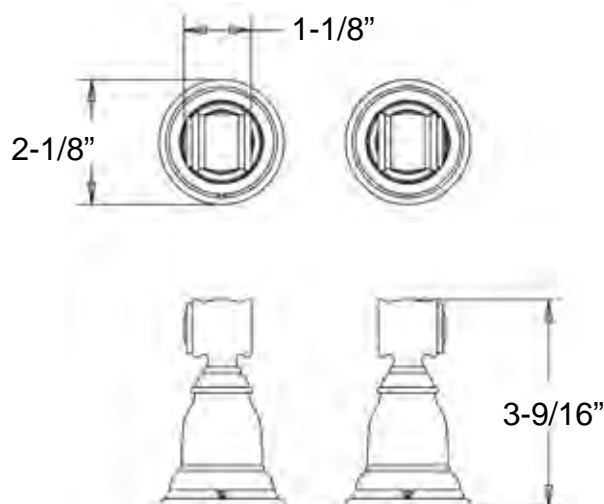
- Material: Zinc Die-cast
- Concealed Surface Mount Application
- Provided with
 - Mounting Plate: 1-13/16" x 1-3/8"
 - Plastic Anchors x 4
 - Steel Phillips Head Screws #8 x 1-1/4"
- Projection: 3-9/16" from Mounting Surface
- Overall Size: 2-1/8" x 2-1/8"

Charleston
Collection



Available Finish

- ☐ Chrome
- ☐ Satin Nickel
- ☐ Venetian Bronze
- ☐ Matte Black



18" x 3/4" Towel Bar (round bar)

Model: BC10-13818

Features

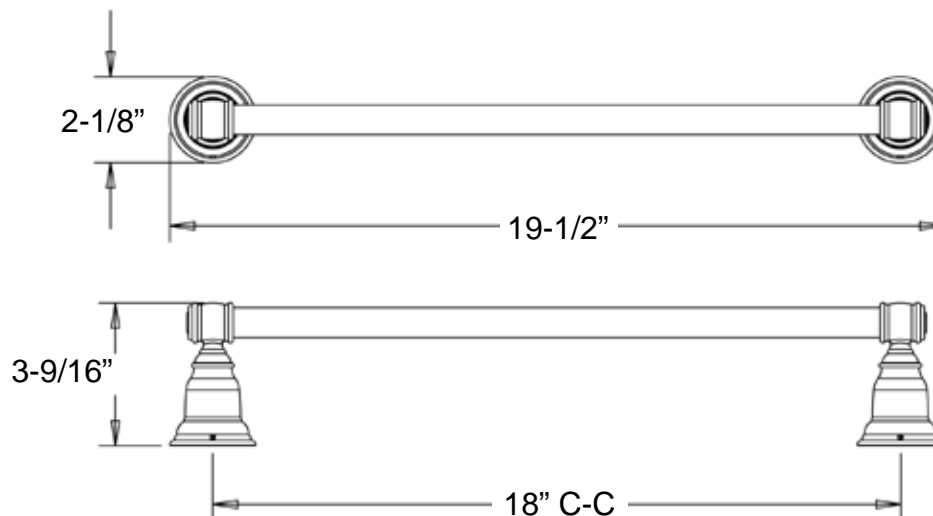
- Material: Zinc Die-cast
- Concealed Surface Mount Application
- Provided with
 - Mounting Plate: 1-13/16" x 1-3/8"
 - Plastic Anchors x 4
 - Steel Phillips Head Screws #8 x 1-1/4"
- Projection: 3-9/16" from Mounting Surface
- Overall Size: 19-1/2" x 2-1/8"

Charleston
Collection



Available Finish

- ☐ Chrome
- ☐ Satin Nickel
- ☐ Venetian Bronze
- ☐ Matte Black



24" x 3/4" Towel Bar (round bar)

Model: BC10-13824

Features

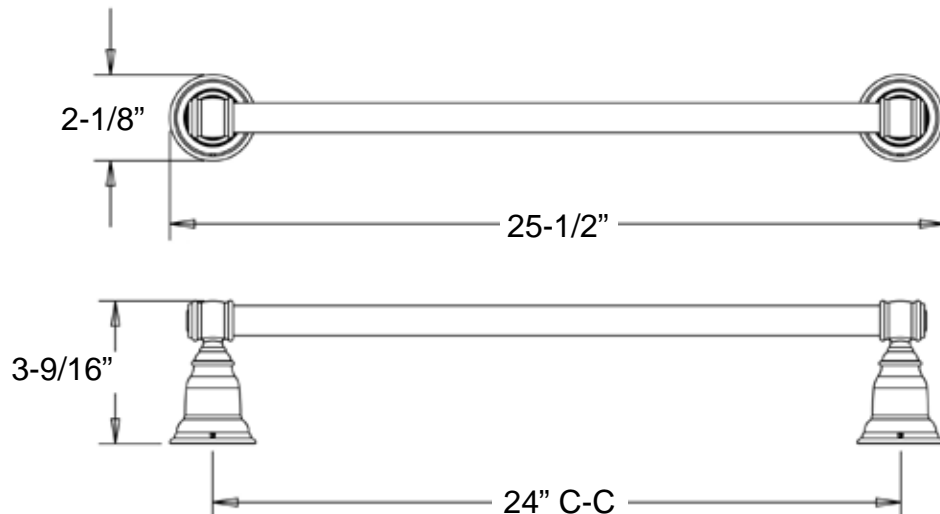
- Material: Zinc Die-cast
- Concealed Surface Mount Application
- Provided with
 - Mounting Plate: 1-13/16" x 1-3/8"
 - Plastic Anchors x 4
 - Steel Phillips Head Screws #8 x 1-1/4"
- Projection: 3-9/16" from Mounting Surface
- Overall Size: 25-1/2" x 2-1/8"

Charleston
Collection



Available Finish

- ☐ Chrome
- ☐ Satin Nickel
- ☐ Venetian Bronze
- ☐ Matte Black



30" x 3/4" Towel Bar (round bar)

Model: BC10-13830

Features

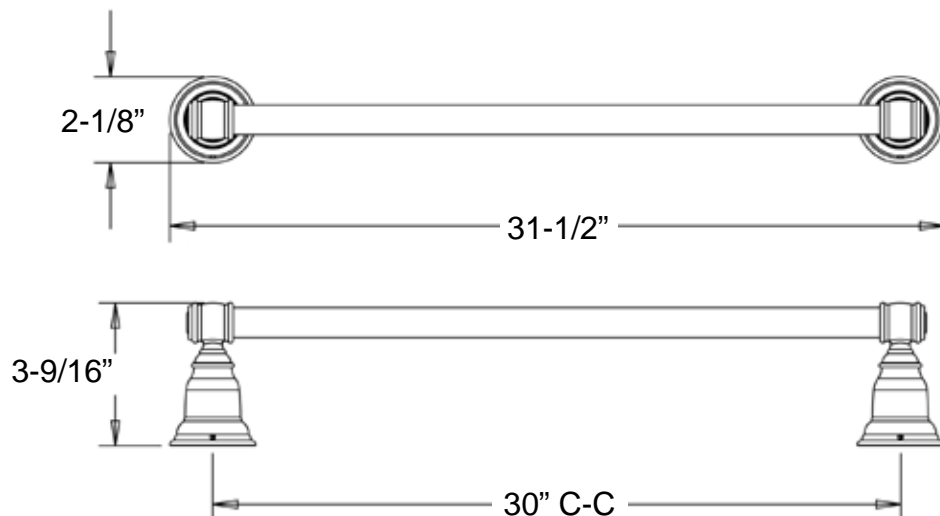
- Material: Zinc Die-cast
- Concealed Surface Mount Application
- Provided with
 - Mounting Plate: 1-13/16" x 1-3/8"
 - Plastic Anchors x 4
 - Steel Phillips Head Screws #8 x 1-1/4"
- Projection: 3-9/16" from Mounting Surface
- Overall Size: 31-1/2" x 2-1/8"

Charleston
Collection



Available Finish

- ☐ Chrome
- ☐ Satin Nickel
- ☐ Venetian Bronze
- ☐ Matte Black



Double Robe Hook

Model: BC10-22

Features

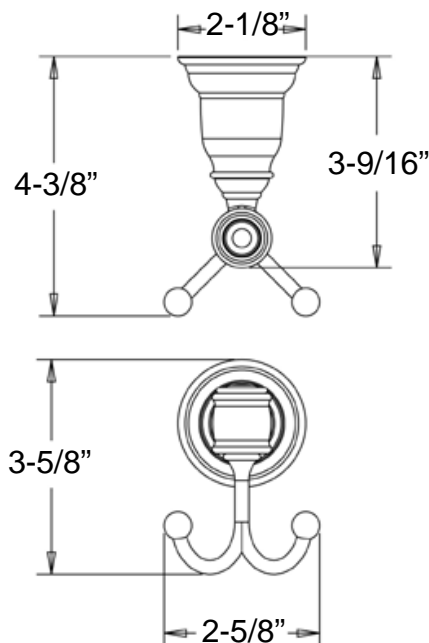
- Material: Zinc Die-cast
- Concealed Surface Mount Application
- Provided with
 - Mounting Plate: 1-13/16" x 1-3/8"
 - Plastic Anchors x 2
 - Steel Phillips Head Screws #8 x 1-1/4"
- Projection: 4-3/8" from Mounting Surface
- Overall Size: 2-5/8" x 3-5/8"

Charleston
Collection



Available Finish

- ☐ Chrome
- ☐ Satin Nickel
- ☐ Venetian Bronze
- ☐ Matte Black



Metal Towel Ring

Model: BC10-32

Features

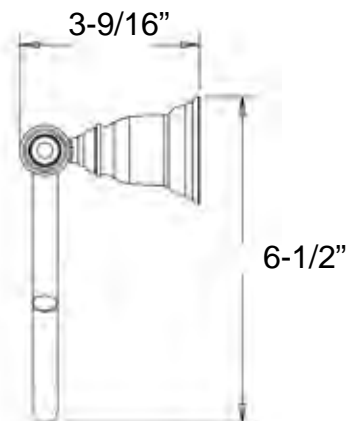
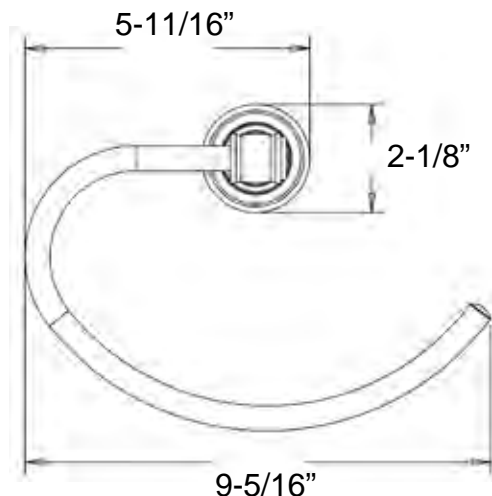
- Material: Zinc Die-cast
- Concealed Surface Mount Application
- Provided with
 - Mounting Plate: 1-13/16" x 1-3/8"
 - Plastic Anchors x 2
 - Steel Phillips Head Screws #8 x 1-1/4"
- Projection: 3-9/16" from Mounting Surface
- Overall Size: 9-5/16" x 6-1/2"

Charleston Collection



Available Finish

- ☐ Chrome
- ☐ Satin Nickel
- ☐ Venetian Bronze
- ☐ Matte Black



Surface Paper Holder

Model: BC10-42

Features

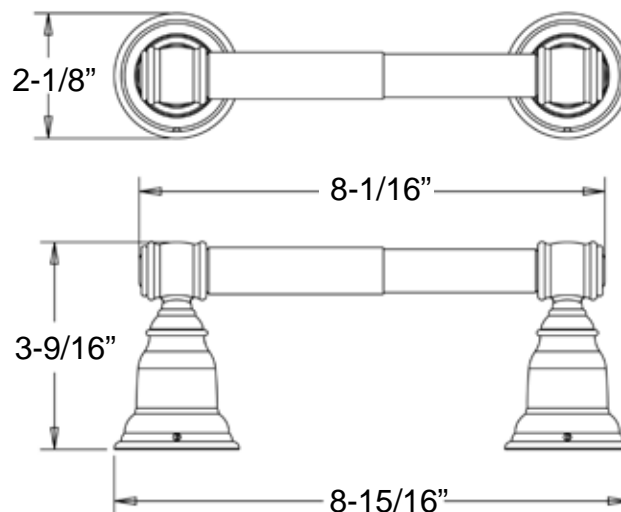
- Material: Zinc Die-cast
- Concealed Surface Mount Application
- Provided with
 - Mounting Plate: 1-13/16" x 1-3/8"
 - Plastic Anchors x 4
 - Steel Phillips Head Screws #8 x 1-1/4"
- Projection: 3-9/16" from Mounting Surface
- Spring-Loaded Plastic Paper Holder Roller 7/8" Diameter x 6"
- Overall Size: 8-15/16" x 2-1/8"

Charleston
Collection



Available Finish

- ☐ Chrome
- ☐ Satin Nickel
- ☐ Venetian Bronze
- ☐ Matte Black



European-Style Paper Holder

Model: BC10-43

Features

- Material: Zinc Die-cast
- Concealed Surface Mount Application
- Provided with
 - Mounting Plate: 1-13/16" x 1-3/8"
 - Plastic Anchors x 2
 - Steel Phillips Head Screws #8 x 1-1/4"
- Protrudes 3-9/16" from the Mounting Surface
- Overall Size: 6-5/8" x 4-1/8"

Charleston
Collection



Available Finish

- ☐ Chrome
- ☐ Satin Nickel
- ☐ Venetian Bronze
- ☐ Matte Black

